



**SOLID**  
TO SUCCEED



# TELESCOPIC BOOM LIFT

## XGS28ACK

Comply with CE

### Standard configuration

- 3-entry platform with side revolving door
- Axle oscillation
- Lowering and moving alarm
- Tilt alarm
- Horn with adjustable volume
- Emergency stop of platform and chassis
- Emergency power unit
- Axle oscillation pressure detection system
- 4-wheel braking system
- Self-leveling platform
- Proportional joystick control
- Drive enable
- Lockable battery and oil tank mounting case
- Telematics pre-interface
- Anti-extrusion protection device
- Harsh environment kits
- Thumb rocker steering



Working height  
28.8 meters



Lift capacity  
300/460Kg



Electric  
power



### Optional configuration

- Platform power supply
- Air pipe to platform
- Tool tray
- Working light assembly
- Fall arrest assembly
- Platform anti-squeeze auxiliary track
- Platform with half-height mesh panel
- Power Inverter
- Lithium Battery 80V/604Ah
- Solid tires 995mm×380mm
- Gray perfusion-type tires 995mm×380mm

**XCMG FIRE-FIGHTING SAFETY EQUIPMENT CO.,LTD**

No.17 Zhujiang East Road, Hi-Tech Development Zone, Xuzhou, Jiangsu, China  
mewp@xcmg.com

# XGS28ACK



**SOLID**  
TO SUCCEED

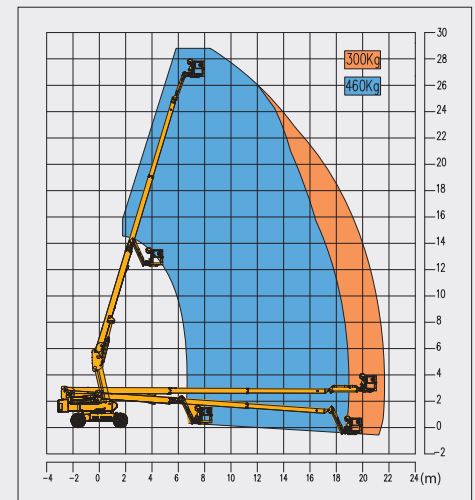
## Telescopic Boom Lift-Electric

Item	Metric	
<b>Dimension</b>		
Overall dimension - stowed state	Length	11690mm
	Width	2490mm
	Height	2925mm
Overall dimension - transportation	Length	11455mm
	Width	2490mm
	Height	3000mm
Platform dimension	Length	2400mm
	Width	900mm
	Height	1150mm
Wheelbase		3200mm
Fly jib length		1850mm
Min. ground clearance		320mm

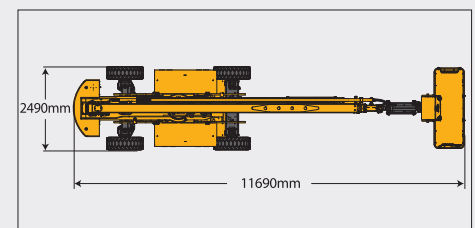
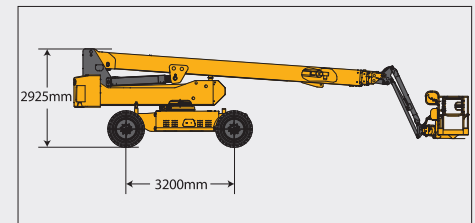
<b>Performance</b>	
Max. working height	28.8m
Max. platform height	26.8m
Max. working range	22m
Max. lift capacity	300kg(unlimited)/460kg(limited)
Max. number of occupants	3
Max. working slope	X-5°/ Y-5°
Telescopic boom luffing range	-4°~ +73°
Fly jib luffing range	-65°~ +70°
Turntable rotation	360°
Platform rotation	160°
Total weight	16600kg
Driving speed (stowed)	6km/h
Driving speed (raised or extended)	0.6km/h
Min. turning radius (inside/outside)	3500mm/6500mm
Turntable tailswing (stowed)	1890mm
Max. gradeability	45% (24°)

<b>Power source</b>	
Control	12V DC proportional control
Traveling motor	5.2kW/52V
Emergency power supply	12V/110Ah
Main power source - battery	76.8V/554Ah
Main power source - charger	80V/80A
Hydraulic tank capacity	140L

<b>Tire</b>	
Tire size	995mm×385mm
Tire ground pressure	9.39kg/cm <sup>2</sup>
Driving wheels	4
Braking wheels	4
Steering wheels	2



Stowed



Trans

