



SOLID
TO SUCCEED

AS

TELESCOPIC BOOM LIFT

XGS22K

Comply with AS

Standard configuration

- Tri-entry platform with side swing gate
- Cold start components
- Engine air pre-filter assembly
- Engine condition monitoring and start protection device
- Axle oscillation
- Lowering and motion alarm
- Tilt alarm
- Emergency stop devices on platform and chassis
- Emergency power unit
- Axle oscillation pressure detection system
- 4-wheel braking system
- Platform auto leveling
- Proportional joystick control
- Drive enable
- Lockable engine hood
- Full-time positive traction drive
- Full-speed traveling motor
- Telematics front-end interface
- Anti-entrapment protection device
- Thumb rocker steering



Working height
22 meters



Lift capacity
300/460Kg



Diesel
power



Optional configuration

- Optional Deutz EPA Tier 4 Engine
- Gray filled-type solid tires 936mm×355mm
- Platform power
- Air pipe connected to platform option
- Tool tray
- Working light assembly
- Fall arrest assembly
- Platform anti-squeeze auxiliary rail
- Platform with half-height mesh
- Hydraulic generator
- Mechanical anti-entrapment device

XCMG FIRE-FIGHTING SAFETY EQUIPMENT CO.,LTD

No.17 Zhujiang East Road, Hi-Tech Development Zone, Xuzhou, Jiangsu, China
mewp@xcmg.com

XGS22K



SOLID
TO SUCCEED

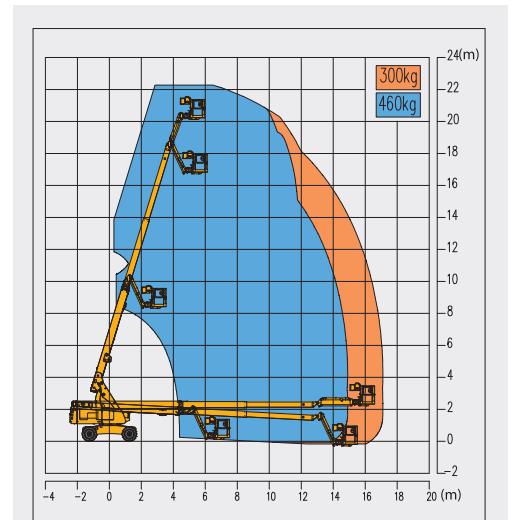
Telescopic Boom Lift-Engine Powered

Item	Metric	
Dimension		
Overall dimension - stowed	Length	10080mm
	Width	2490mm
	Height	2530mm
Overall dimension - transported	Length	9850mm
	Width	2490mm
	Height	3000mm
Platform dimensions	Length	2400mm
	Width	900mm
	Height	1150mm
Wheelbase		2500mm
Fly jib length		1850mm
Min. ground clearance		230mm

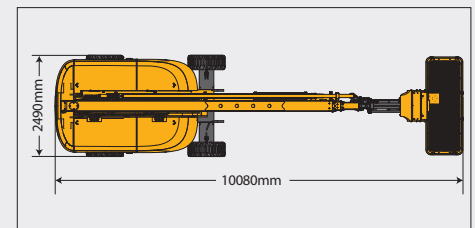
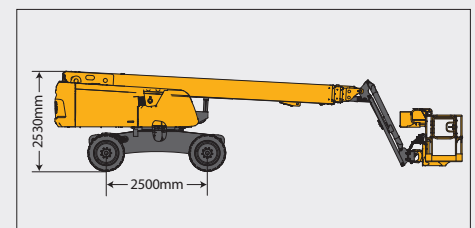
Performance	
Max. working height	22m
Max. platform height	20m
Max. outreach	17.2m
Max. lift capacity	300kg (unlimited)/460kg(limited)
Max. platform occupancy	3
Max. chassis allowable angle	X-5°/ Y-5°
Telescopic boom luffing range	-3°~ +73°
Fly boom luffing range	-65°~ +70°
Turntable rotation	360°
Platform rotation	160°
Total weight	12460kg
Driving speed (stowed)	6.3km/h
Driving speed (raised or extended)	0.6km/h
Min. turning radius (inside/ outside)	3195mm/6160mm
Turntable tailswing (stowed)	1310mm
Max. gradeability	45% (24°)

Power source	
Control	12 V DC proportional control
Emergency power supply	12V/200Ah
Engine model	Kubota V2403
Engine-power/ rpm	36.5kW/(2600r/min)
Max. engine torque	158.6N·m/(1600 r/min)
Engine emission standard	China IV
Hydraulic tank capacity	120L
Fuel tank capacity	150L

Tire	
Tire size	915mm×326mm
Tire ground pressure	8.86kg/cm ²
Driving wheels	4
Braking wheels	4
Steering wheels	2



Stowed



Trans

