

ARTICULATED BOOM LIFT

XGA16K

Comply with AS

Standard configuration

- Dual-entry platform with full-open gate
- Cold start components
- Engine air pre-filter assembly
- Engine condition monitoring and start protection device
- Axle oscillation
- Lowering and motion alarm
- Tilt alarm
- Emergency stop devices on platform and chassis
- Emergency power unit
- Axle oscillation pressure detection system
- 4-wheel braking system
- Proportional auto leveling system
- Drive enable
- Lockable engine hood
- Full-time positive traction drive
- Full-speed traveling motor
- Telematics front-end interface
- Anti-entrapment protection device
- Hydraulic oil cooler
- Hostile environment package
- Thumb rocker steering
- Proportional joystick control



Working height
16.63 meters



Lift capacity
256/350Kg



Diesel
power



Optional configuration

- Solid filled-type tires 836mm×319mm
- Solid tires 830mm×270mm
- Hydraulic generator
- Mechanical anti-entrapment device
- Platform power
- Air pipe connected to platform option
- Tool tray
- Working light assembly
- Fall arrest assembly
- Platform anti-squeeze auxiliary rail
- Platform with half-height mesh

XCMG FIRE-FIGHTING SAFETY EQUIPMENT CO.,LTD

No.17 Zhujiang East Road, Hi-Tech Development Zone, Xuzhou, Jiangsu, China
mewp@xcmg.com

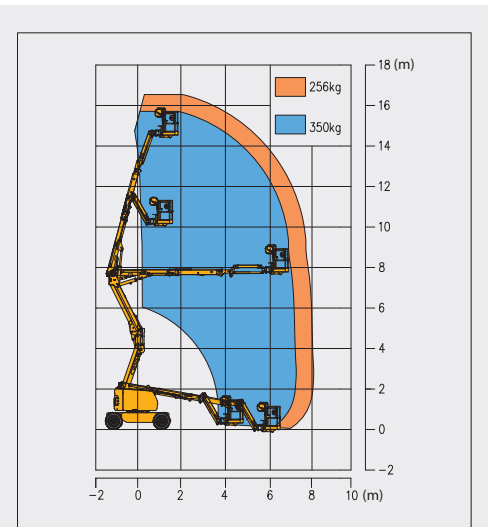
Articulated Boom Lift-Engine Powered

Item	Metric	
Dimension		
Overall dimension - stowed	Length	6850mm
	Width	2320mm
	Height	2380mm
Overall dimension - transported	Length	5600mm
	Width	2320mm
	Height	2650mm
Platform dimensions	Length	1830mm
	Width	760mm
	Height	1150mm
Wheelbase		2360mm
Fly jib length		1420mm
Min. ground clearance		300mm

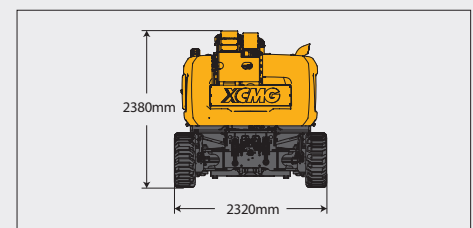
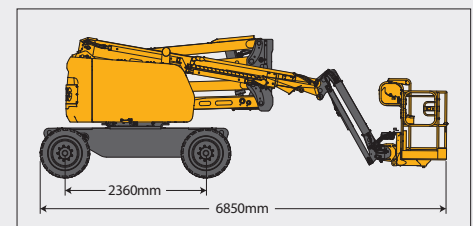
Performance	
Max. working height	16.63 m
Max. platform height	14.63 m
Max. outreach	8.82 m
Max. up and over clearance	7.7 m
Max. lift capacity	256kg(unlimited)/350kg(limited)
Max. platform occupancy	2/3
Max. chassis allowable angle	X-5°/Y-5°
1st boom luffing range	0° ~ 65°
2nd boom luffing range	-11° ~ 75°
Fly boom luffing range	-60° ~ 70°
Turntable rotation	355°Non-continuous
Platform rotation	160°
Total weight	7600 kg
Driving speed (stowed)	5.5 km/h
Driving speed (raised or extended)	0.6 km/h
Min. turning radius (inside/ outside)	3200 mm/4700 mm
Turntable tailswing (stowed)	0 mm
Max. gradeability	45% (24°)

Power source	
Control	12 V DC proportional control
Emergency power supply	12V/180Ah
Engine model	Kubota V2403
Engine power	36.8 kW(2700 r/min)
Max. engine torque	157.4N·m/(1600r/min)
Engine emission standard	Tier 4
Hydraulic tank capacity	80L
Fuel tank capacity	65L

Tire	
Tire size	835mm×290mm
Tire ground pressure	5.51kg/cm ²
Driving wheels	4
Braking wheels	4
Steering wheels	2



Stowed



Trans

