



SOLID
TO SUCCEED

AS

ARTICULATED BOOM LIFT

XGA12K

Comply with AS

Standard configuration

- 1.4 m × 0.7 m work platform
- Lift capacity up to 230 kg
- 160° platform rotation
- 12V DC auxiliary power
- Cold start components
- Engine air pre-filter assembly
- Engine condition monitoring and start protection device
- 4-wheel drive (standard)
- Lowering and motion alarm
- Tilt alarm
- Horn
- Emergency stop devices on platform and chassis
- Emergency power unit
- 4-wheel braking system
- Proportional auto leveling system
- Proportional joystick control
- Drive enable
- Hourmeter
- Lockable engine hood
- 355° non-continuous turntable rotation
- Full-time positive traction drive
- Full-speed traveling motor
- Telematics front-end interface
- Active anti-entrapment system
- Hostile environment package
- Thumb rocker steering
- AC power cord to platform
- Foam-filled tire



Working height
12.55 meters



Lift capacity
230Kg



Diesel
power



Optional configuration

- Air pipe connected to platform option
- Tool tray
- Working light assembly

XCMG FIRE-FIGHTING SAFETY EQUIPMENT CO.,LTD

No.17 Zhujiang East Road, Hi-Tech Development Zone, Xuzhou, Jiangsu, China
mewp@xcmg.com

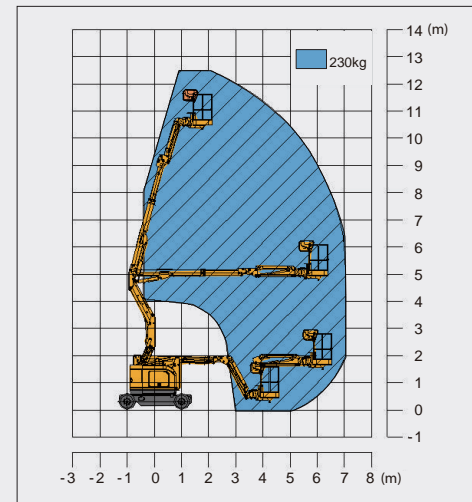
XGA12K



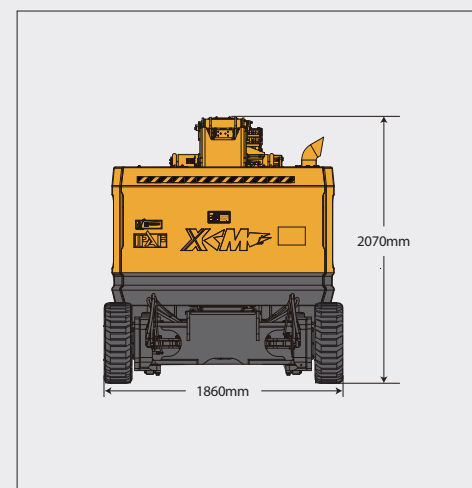
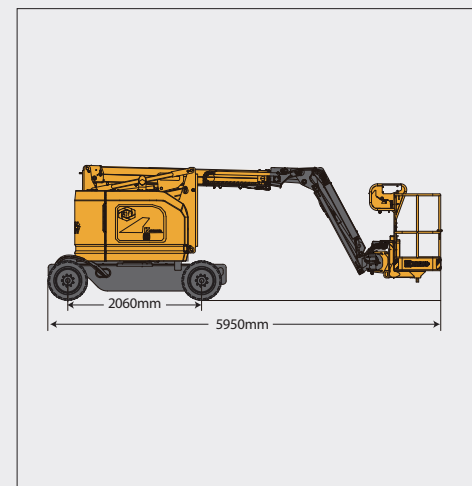
SOLID
TO SUCCEED

Articulated Boom Lift-Engine Powered

Item	Metric	
Dimension		
Overall dimension - stowed	Length	5950mm
	Width	1860mm
	Height	2070mm
Overall dimension - transported	Length	5950mm
	Width	1860mm
	Height	2070mm
Platform dimensions	Length	1400mm
	Width	700mm
	Height	1150mm
Wheelbase	2060mm	
Fly jib length	1420mm	
Min. ground clearance	200mm	
Performance		
Max. working height	12.55m	
Max. platform height	10.55m	
Max. outreach	7.1m	
Max. up and over clearance	4.9m	
Max. lift capacity	230kg(unlimited)	
Max. platform occupancy	2	
Max. chassis allowable angle	X-5°/ Y-5°	
1st boom luffing range	-6°~69°	
2nd boom luffing range	-1.5°~75°	
Fly boom luffing range	-65°~70°	
Turntable rotation	355°Non-continuous	
Platform rotation	160°	
Total weight	5600 kg	
Driving speed (stowed)	5.0 km/h	
Driving speed (raised or extended)	1.1 km/h	
Min. turning radius (inside/ outside)	2320 mm/3980 mm	
Turntable tailswing (stowed)	0 mm	
Max. gradeability	35% (19°)	
Power source		
Control	12 V DC proportional control	
Emergency power supply	12V/180Ah	
Engine model	Kubota D1105	
Engine power	171 kW (3000r/min)	
Max. engine torque	67.3 N·m/(2200r/min)	
Engine emission standard	EU V	
Hydraulic tank capacity	39 L	
Fuel tank capacity	40 L	
Tire		
Tire size	687mm×245mm	
Tire ground pressure	5.51kg/cm ²	
Driving wheels	4	
Braking wheels	4	
Steering wheels	2	



Stowed/Trans



The print does not belong to the contract, nor a part of the commercial contract. We reserve the right to revise the product model, parameters, configuration based on the continuous improvement requirements of the product, without prior notice. Pictures are for reference only, and the specific product shall depend on the real product. The final interpretation rights belong to XCMG.