

All Rights Reserved

Materials and specifications are subject to change without notice. Featured machines in photos may include additional equipment. See your XCMG dealer for available options.



XS-Series Single Drum Compactors

XS185S



Roy Rossini - Deputy General Manager

Address: Level 10, 185 Victoria Square
Adelaide S.A 5000

Mobile: +61 0411 591 394 (Australia)

Email: royrossini@xcmg.com

XCMG ROAD MACHINERY BUSINESS DEPARTMENT

Address: No.1 Taoshan Road, Xuzhou Economic Developing Zone,
Jiangsu, China 221004

Tel: +86(0)516 8773 9703

Fax: +86(0)516 8773 9230

E-mail: zlservice@xcmg.com

www.xcmg.com





INTRODUCTION OF XCMG

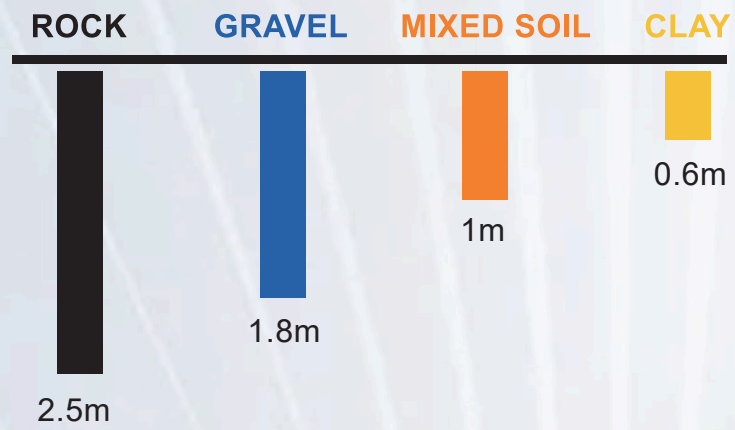
XCMG, as a leading enterprise valued of 100 billion RMB, with the largest scale, the best technology level, the largest export volume, and high competitiveness and influence in China's construction machinery industry, has been occupying the first place in China's construction machinery industry for decades, and it now ranks the third in the world industry and the 395th among the world's top 500 brands. The main products by XCMG consists of 16 categories of equipment such as hoisting machinery, excavation machinery, concrete machinery, mining machinery, earth-moving machinery and road machinery, etc., as well as three categories of key components such as hydraulic system, transmission system and electric control system. Among above-mentioned, hoisting machinery ranks first in the world, and package solution of road construction and maintenance machinery, piling machinery and concrete machinery are among the first-class bloc in the world.

XCMG has accumulated more than 8000 approved patents, including more than 1900 invention patents and more than 130 PCT international patents. Entities of R&D centers, manufacturing plants or KD factories are in operation in more than 10 countries such as Germany, the United States, Brazil and India, XCMG has also acquired three European enterprises including Schwing in Germany. The Brazil manufacturing plant, with an investment of 350 million dollars to build up factories on a bare ground, has become a model of economic cooperation between China and Brazil. At present, XCMG products are exported to 187 countries and regions, covering 97% of the countries along "The Belt and Road" area. In export business to 35 countries, XCMG's proportion ranks NO. 1, with a steady first place within Chinese industry in terms of annual export volume and overseas income.

PRODUCT HIGHLIGHTS

The XS265S hydraulic drive, single drum vibratory roller features high vibratory force. Producing high compaction efficiency and compaction quality. It is used widely in compaction work on base layer, sub-base layer and rock fill for roads, railways, airports, harbors, dams and industrial construction sites.

PRODUCT HIGHLIGHTS



Compaction Performance

Dual frequency and dual amplitude

435/315kN vibration force achieves maximum compaction depth and is adaptable to different materials.



Drift-sand



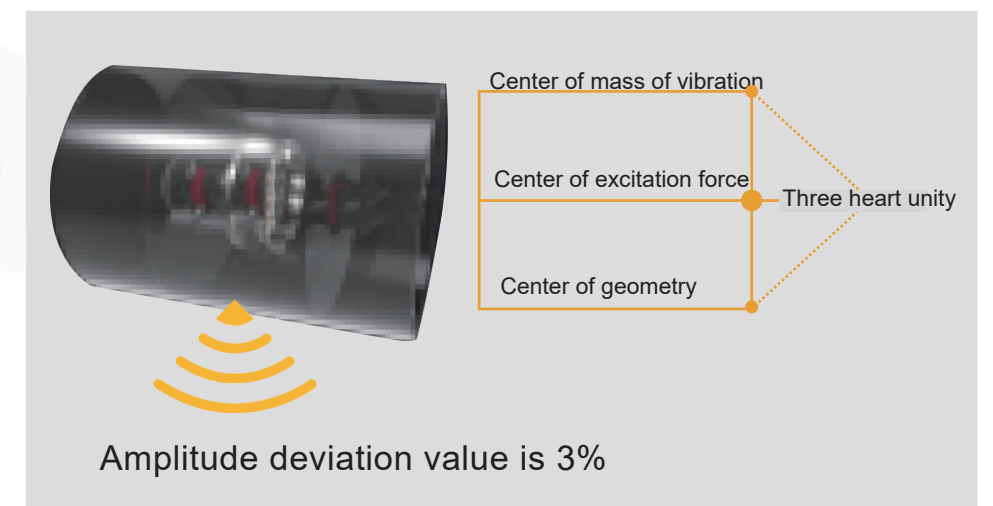
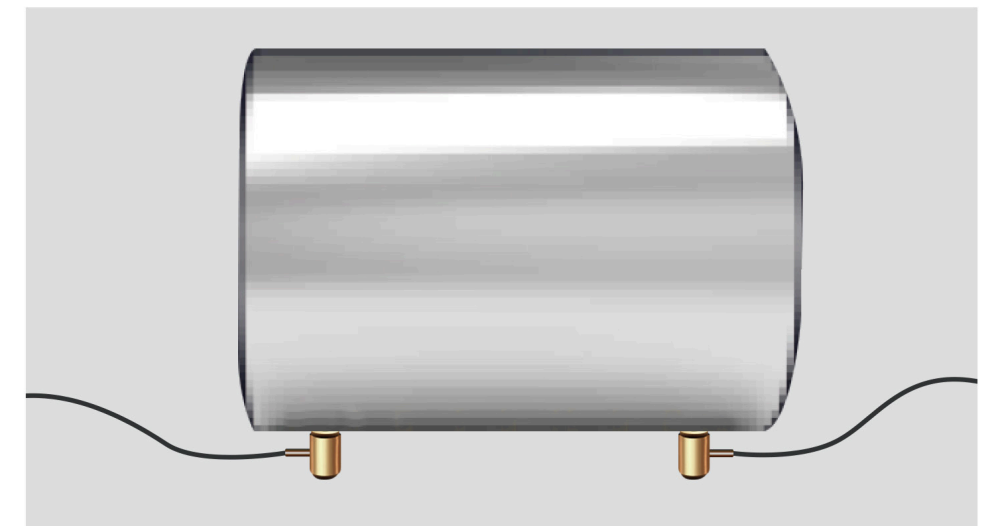
Gravel-soil

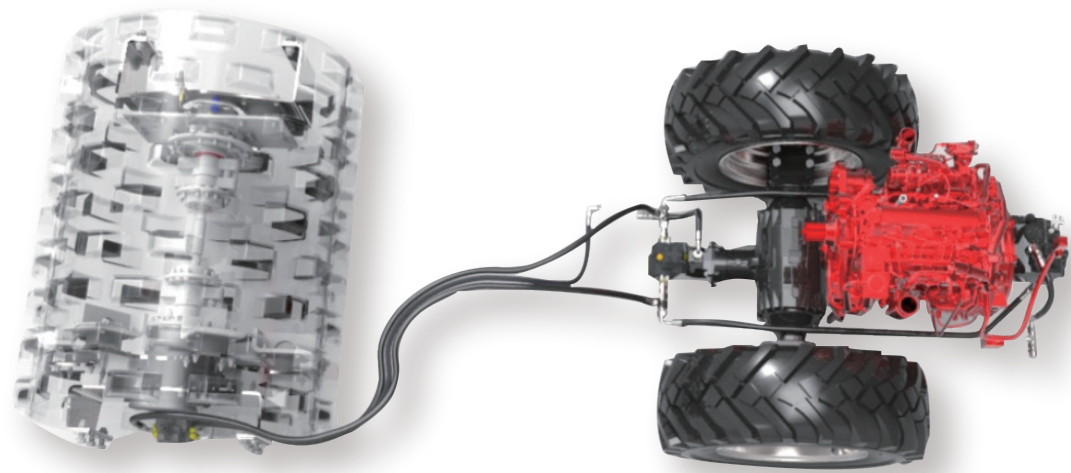


Compaction quality

Three center coincidence

The drum "three center coincidence" technology and the amplitude uniformity control technology essentially guarantee the compaction quality and improve the efficiency of dynamic and static compaction.





Extraordinary traction

- Powerful CUMMINS engine, up to 50% gradeability, drive axles with anti-slip differential for more efficient torque transmission.



Human Machine Interaction–illumination

- Four LED working lights front and rear of cab provide excellent illumination for night operation.
- Back-up lights, steering signals, rotating beacon lights for better signalling.



PRODUCT HIGHLIGHTS

Comfortable and safe operation



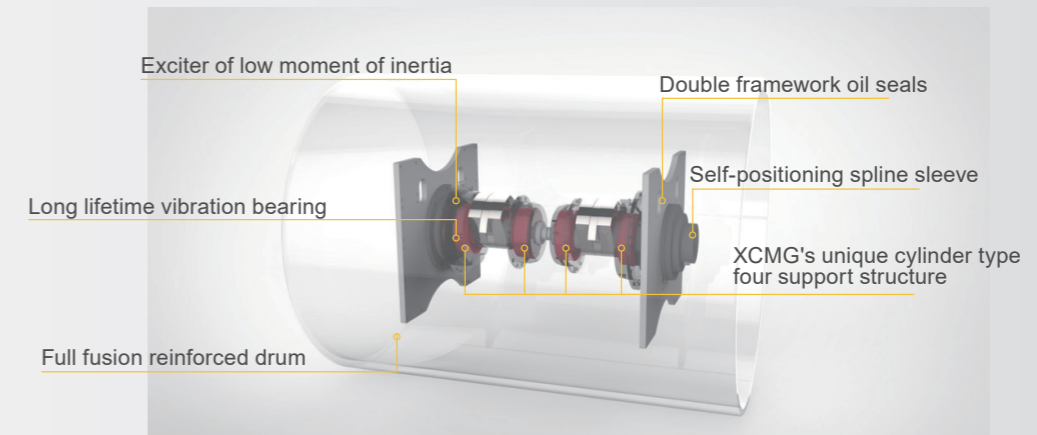
- ① ROPS/FOPS cabin insulation provides a quiet operating environment.
- ② Standard heating/cooling air conditioning, three-dimensional fan for balanced internal temperature.
- ③ Adjustable air suspension seat provides full support for operator and reduces whole body vibrations.
- ④ reversing camera provide excellent driving visibility.

Superior reliability

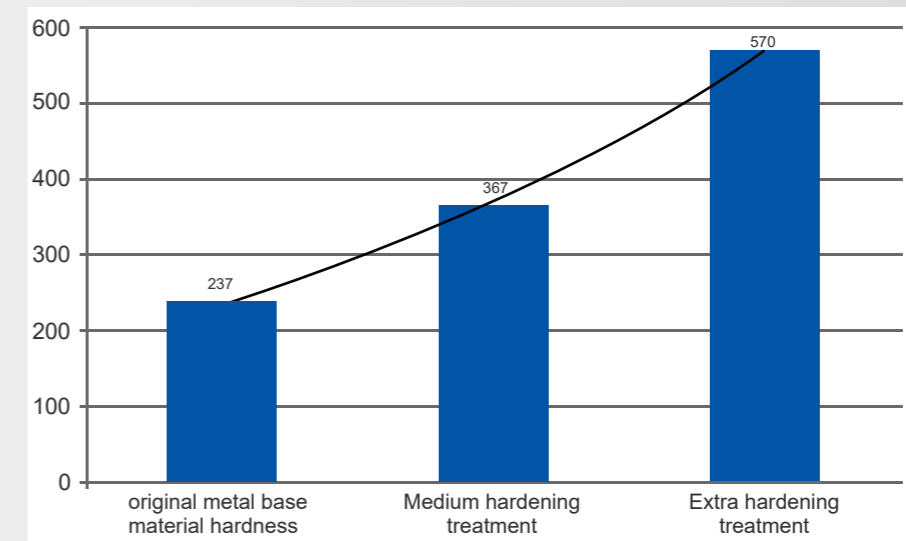


Fault diagnosis function, The large LCD display shows real-time parameters of the whole machine, as well as maintenance and repair information and the engine's working status. Avoid "sick" operation of equipment.

Lifetime of long life drum 10000 hours
Average lifetime of industry 5000 hours



Durable full-fusion reinforced drum; XCMG special long-life vibration bearings, the theoretical life of up to 10,000h.



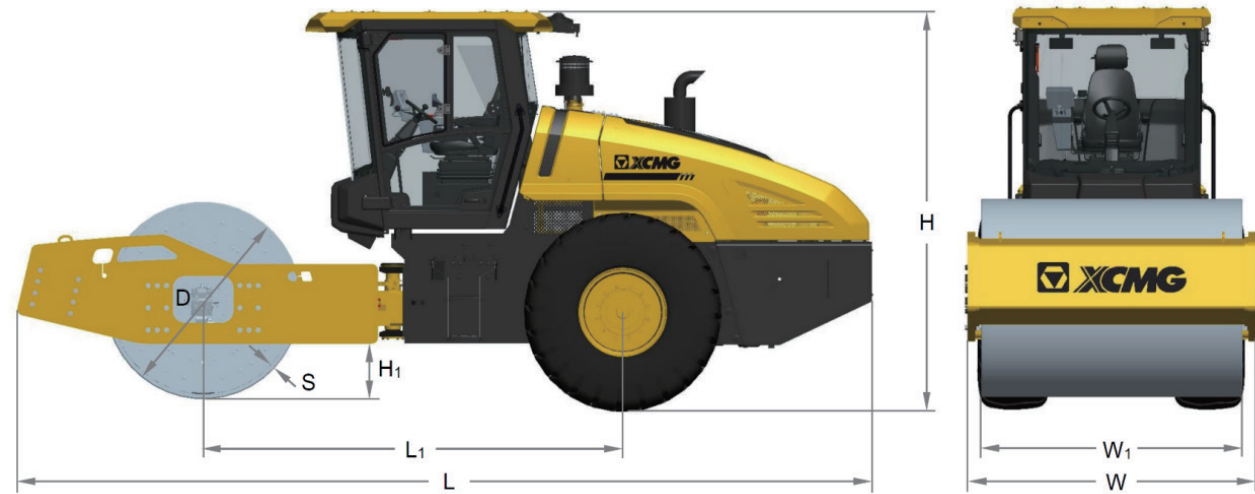
Medium hardening treatment, steel hardness can be increased by 55% on the basis of the original metal base material hardness; Extra hardening treatment, steel hardness can be increased by 140% on the basis of the original metal base material hardness, which is suitable for vibration wheels under severe working conditions.

Easy to Service

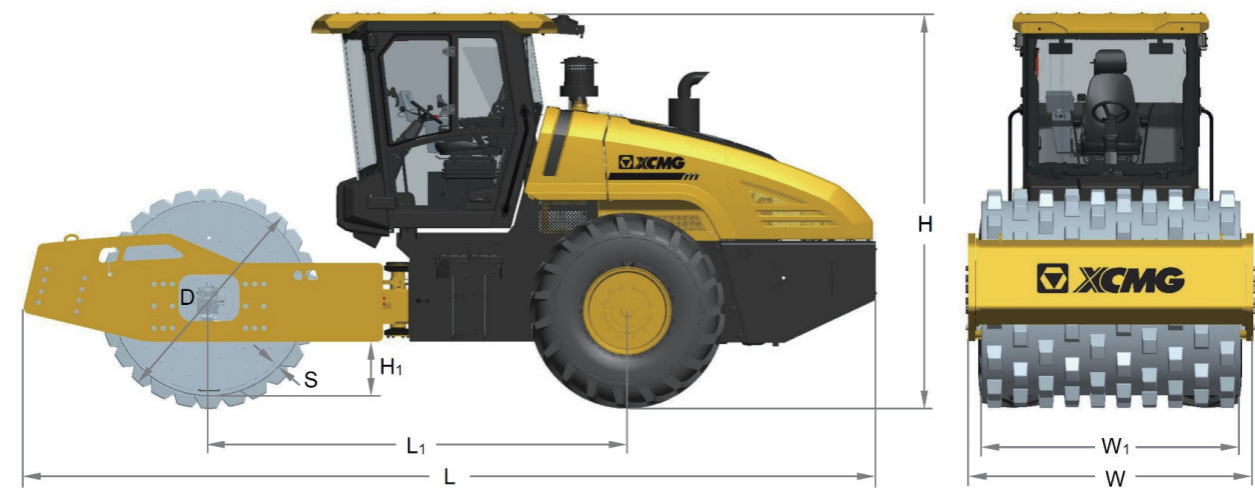
- Linear drive support hood lifting mode, enables large opening angle, allow easy access to maintenance parts.
- The one-button operation in the cabin brings great convenience for maintenance.



DIMENSIONS



Dimensions (mm)	L	L1	W	W1	H	H1	S	D
XS265S	6990	3430	2470	2170	3260	540	40	1600



Dimensions (mm)	L	L1	W	W1	H	H1	S	D
XS265SPD	6990	3430	2470	2170	3260	540	40	1812

SPECIFICATIONS

Item	Content	Unit	XS265S	XS265SPD
Weights Parameters	Operating weight	kg	26000	26800
	Maximum operating weight	kg	26000	26800
	Front axle weight	kg	17000	17800
	Rear axle weight	kg	9000	9000
	Static linear load	N/cm	784	—
Maneuverability Parameters	Operating speed (First/Second gear)	km/h	0-10.6	10-11.2
	Theoretical gradeability	%	50	50
	Minimum external turning radius	mm	6920	6920
	Minimum ground clearance	mm	540	540
	Wheel base	mm	3430	3430
	Steering angle	°	±33	±33
	Oscillation angle	°	±10	±10
Compaction Performance	Vibration frequency (LF/HF)	Hz	27/32	27/32
	Nominal amplitude (High/Low amplitude)	mm	2.05/1.05	1.7/0.9
	Exciting force (LF/HF)	kN	435/315	435/315
	Drum diameter	mm	1600	1812
	Compaction width	mm	2170	2170
Engine	Model	-	QSB6.7	QSB6.7
	Rated power	kW	164	164
	Rated speed	r/min	2200	2200
Tire	Spec.	-	23.5-25-16PR	23.5-25-16PR
	Ply rating	-	16	16
	Air pressure	kPa	300-375	300-375
Service refill capacities	Fuel tank	L	300	300
	Urea tank	L	—	—

Optimum services , XCMG Guaranteed

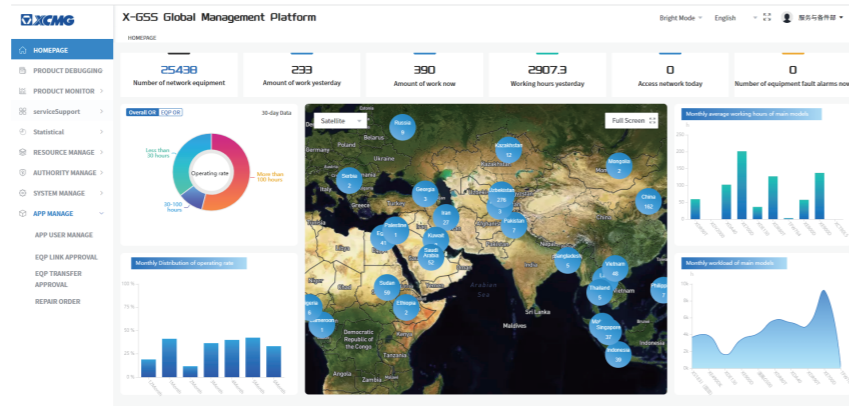


Professional Integrated Complete Solutions

XCMG group has built a strong reputation based on the quality, reliability and durability of its construction machinery. What's more, XCMG has gradually established a service network to constantly provide its local integrated and highly efficient complete solutions for all users.

Full range of services ready for you

In order to respond to your needs as fast as possible, XCMG experts are on their way to your job site from one of our facilities near you. Full range of services are available in order to reduce your total cost of ownership and increase your revenue.



XCMG Global Spareparts System

