



XGA16ACK

MOBILE ELEVATING WORK PLATFORM

Comply with AS/NZS/CE/ANSI/CSA



XGA16ACK

MOBILE ELEVATING WORK PLATFORM

OVERVIEW AND FEATURES

The XGA16ACK mobile lifting work platform has a compact structure, high load and drive capacity, long life, energy saving and environmental protection, suitable for indoor and outdoor working conditions.

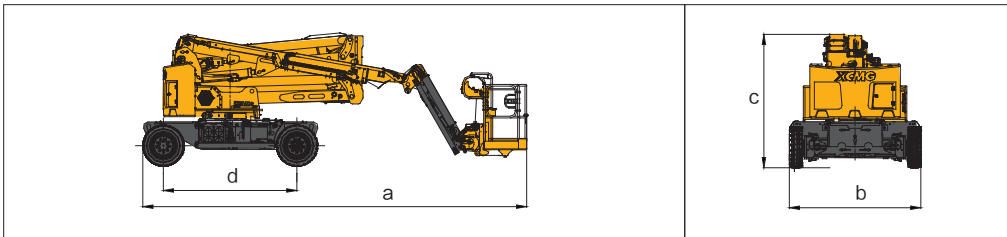
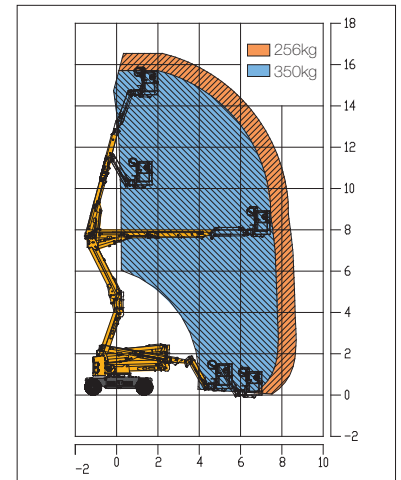
PERFORMANCE ADVANTAGES AND FEATURES

- The load capacity of 256kg/350kg is the leading in the same metre class.
- The overall length, width and height of the machine are smaller than those in the industry, which can realize two units in one standard container, making it convenient for transportation.
- Strong driving power, climbing capacity up to 30%, easy to transfer.
- Σ-type combined boom, improve the working efficiency.
- The turning radius is as low as 5m, which is flexible and suitable for working in tight spaces.
- Long service life design, equipped with 48V, 400Ah high-capacity battery, providing longer service life.
- Advanced two-wheel AC electric drive technology, steering differential control technology, significantly reduce tyre wear and motor overload rate.
- AC pump control combined with proportional control technology, providing users with a safer and smoother operating experience.
- Green, zero emission and low noise.
- adoption of pre-safety control logic, safety is guaranteed.
- Independent emergency power source, convenient and guaranteed for emergency lowering (emergency power source and main power source share charging plug, intelligent charging, easy operation).
- Realisation of compound action to achieve quick and convenient operation for the user.

OPTIONS

- Half-height protection net
- Platform anti-extrusion hand rail
- Mechanical anti-extrusion device
- Air hose connection to the platform option
- Cold resistant, fire resistant, biodegradable hydraulic fluid
- Tool tray
- Work light assembly
- Aircraft protection
- Fall protection kit
- Platform AC power supply
- Axle balancing system

Work Curve Graph



MAIN PARAMETER

Item	Metric	Imperial
Working Height	16.5 m	54 ft 2 in
Platform Height	14.5 m	47 ft 7 in
Horizontal reach	8.6m	28 ft 3 in
Lift capacity	256/350kg	564/772 lbs
1st Boom luffing range	0~65°	0~65°
2nd Boom luffing range	-11~75°	-11~75°
Fly jib luffing range	-65~+70°	-65~+70°
Turntable rotation	355°	355°
Platform rotation	160°	160°
Tailswing (storage)	0	0
Drive Speed (storage or extended)	4.8 (km/h)/0.6 (km/h)	2.98 mph/0.37 mph
Min. turning radius (outside)	4.7 m	15 ft 5 in
Ground clearance	0.25 m	10 in
Gradeability (counterweight end up or down)	30% /25% (16.7°/14°)	30% /25% (16.7°/14°)
Tires	250-15/7.5	250-15/7.5
Batteries	400Ah/48 V	400Ah/48 V
Main Motor	12 kw/31 V AC	12 kw/31 V AC
Drive Motor	3.3 kw/32 V AC	3.3 kw/32 V AC
Weight	7400 kg	16314 lbs
Platform size	1.8m x0.76 m x1.15m	5.9ft x2.5ft x3.8ft
a. Length	6.785 m	22 ft 3 in
b. Width	2.32 m	7 ft 7 in
c. Height	2.35 m	7 ft 9 in
d. Wheelbase	2.36 m	7 ft 9 in