



XCMG FOR YOUR SUCCESS



GR5505

MOTOR GRADER



Address: No.1, Tao Shan Road, Economic Development Zone, Xu Zhou, Jiangsu Province.
Postcode: 221004
Email: sales@xcmg.com
Website: www.xcmg.com

With continuous development of technologies, we reserve the right to make changes at any time without notice. If differences between the printed image and the original product exist, the original product should prevail.

Unified national service hotline: 4001109999



XCMG ROAD MACHINERY BUSINESS DEPARTMENT

www.xcmg.com

High lights: GR5505

Powerful and efficient construction performance

- 1 > Optimized machine weight and power matching
> Variable power engine control
> Hydro-mechanical transmission with lock-up clutch
> Optimized blade curve
> High-pressure, high-displacement compound sensitive hydraulic drive system
> Linear temperature-controlled independent heat dissipation

Durable structural design

- 2 > Gear train rear axle
> Precision castings for front axle joints, angular positioners and pendulums
> Sealed heavy-duty roller bearings with high wear-resistant alloy steel bushings
> Spacious and comfortable sealed cab

Comfortable and intelligent control driving

- 3 > Dual joystick control
> Throttle lock and Blade floating
> Articulated automatic reset
> Open view
> Intelligent integrated monitoring
> Spacious and comfortable sealed cab
> Control panel and switch distribution meet ergonomic needs

Convenient maintenance

- 5 > Modular design
> The filter elements are arranged side by side, and the oil and water drainage are remotely led to the accessible position on the ground
> Three-level fault alarm and intelligent diagnosis system

Safety Compliance

- 6 > Speed sensitive steering system
> Auxiliary steering, wet brake, electrical hydraulic lockout
> Battery Negative Isolation
> Reverse Camera
> Optional 360-degree panoramic view and automatic fire extinguishing system

Sensitive hydraulic system

- 8 > Combined sealed oil cylinder
> High reliability of hydraulic components
> Lifting and lowering speed



POWERFUL AND EFFICIENT CONSTRUCTION PERFORMANCE

- > Hydraulic transmission with lock-up clutch, when the lock-up clutch is disengaged, the hydraulic mechanical transmission can provide high torque output and stronger impact resistance; when the lock-up clutch is combined with direct drive, the transmission efficiency can be improved and the operation efficiency is higher
- > Optimized machine weight and power matching, providing strong traction output, which can easily cope with sudden and short term load surges and maintain travel speed when under heavy
- > Variable power engine control, which can provide sufficient power in all gears to protect the structure and driveline components while efficiently performing a variety of different working conditions

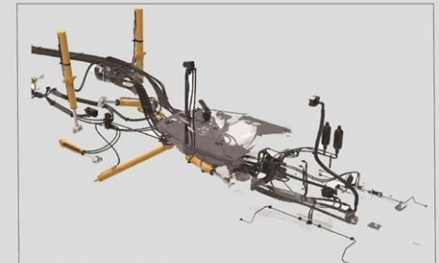
- > With the dynamic steering, the steering control is more sensitive and can complete the turning operation quickly and excellently, reducing the equipment maneuvering time



GR5505



- > Optimized blade curve can provide excellent cutting angle and material turning effect, reduce the material accumulation in the shovel area, and reduce the whole vehicle operation load



- > High-pressure, high-displacement, compound-sensitive hydraulic drive system matches hydraulic flow, pressure and power requirements to ensure that all machine colleagues operate without reducing engine or machine speed

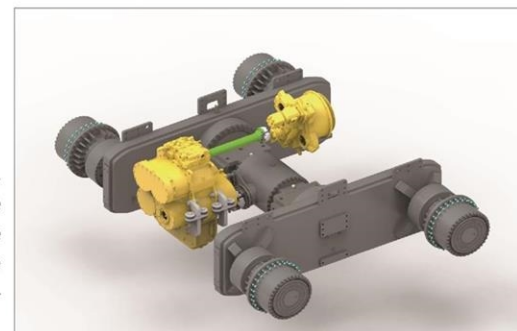


- > Hydro-mechanical drive with lock-up clutch, when the lock-up clutch is disengaged, it is night mechanical drive, which can provide high torque output and stronger impact resistance; when the lock-up clutch is combined, it is direct drive, which can improve the transmission efficiency and higher operating efficiency

DURABLE STRUCTURAL DESIGN

> The front and rear frame, articulated area with redundant design, can ensure excellent performance and durability in heavy load conditions sealed heavy-duty roller bearings and the use of high wear-resistant alloy steel bushings, significantly improve the service life of the front axle, articulated, work devices after rotation

> All-gear drive mining grader drive rear axle, avoiding the key strip wear and impact damage caused by chain drive, and colleagues balance box slewing bearing oscillation, avoiding the copper sleeve structure prone to wear and displacement failure



> Slewing device adopts the combination of impact overload protection worm gear box and slewing bearing drive, slewing resistance is smaller, and enhance the service life of slewing device under large impact conditions



> The front axle joints, angular positioner, pendulum and other impact parts are made of fine castings to improve stress concentration distribution and durability.

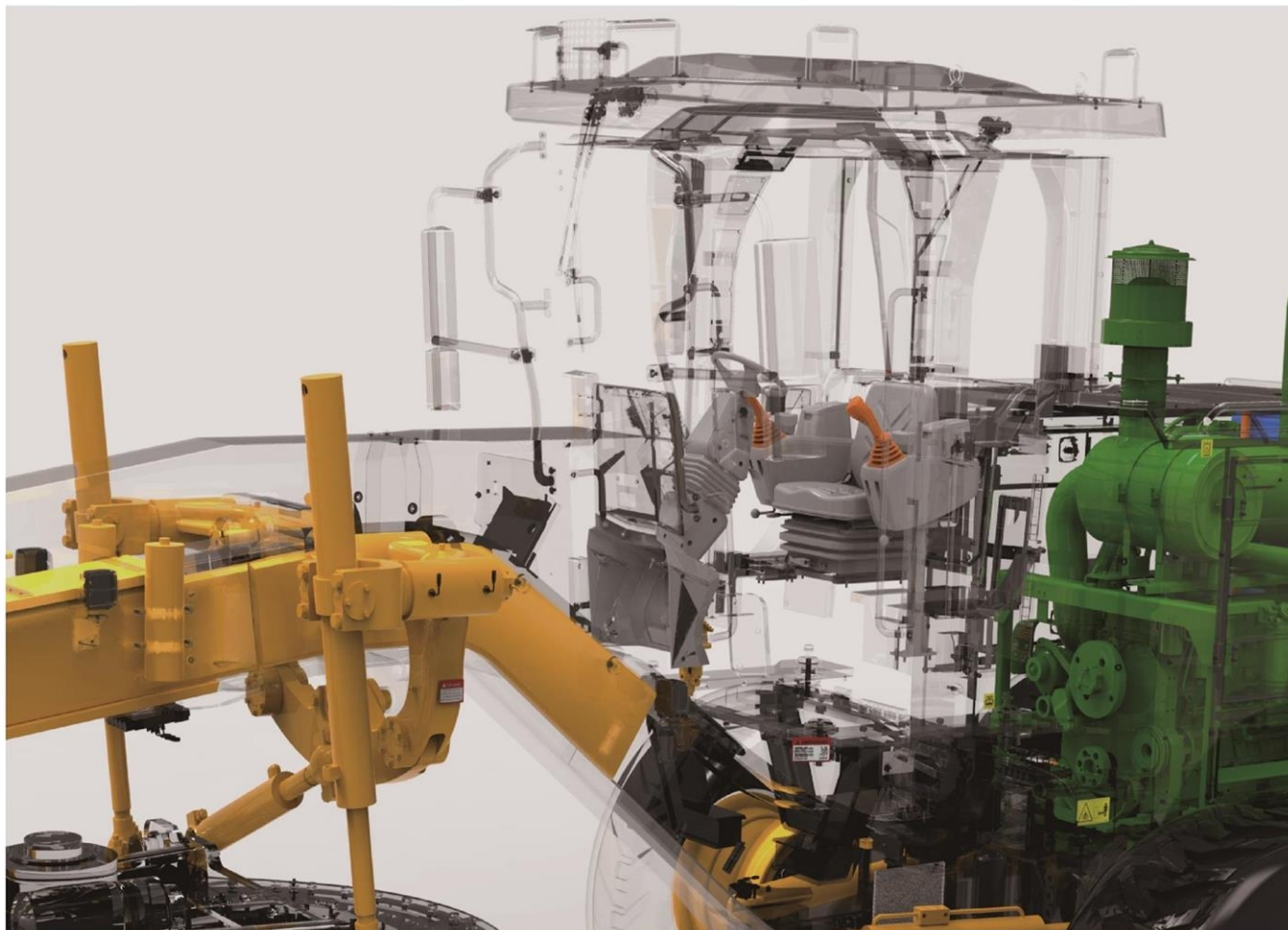


COMFORTABLE AND INTELLIGENT CONTROL EXPERIENCE

- > Electronically controlled double-handle operation, compared with the traditional joystick, significantly reduces the driver's hand and wrist movements, improving operational comfort
- > Steering movement, matching the steering angle of the front axle with the steering opening of the handle, making the steering control more comfortable

- > Blade floating, free floating can respond to the undulation of the road, effectively remove snow and mud from the road, pressurized floating can effectively level the hard road, reduce the frequency of lifting cylinder operation
- > Throttle lock, freeing both feet for cruising operation under normal operation

- > Automatic articulation reset, just press the handle button, the equipment can automatically hitch from any angle back to the center



GR5505

- > Open field of view, providing an excellent view of the blade, equipment travel and steering
- > Intelligent integrated monitoring, easy to monitor the machine operating status and work parameters can be set
- > Spacious and comfortable sealed cab, isolated from the engine and transmission, minimizing the transmission of noise and vibration

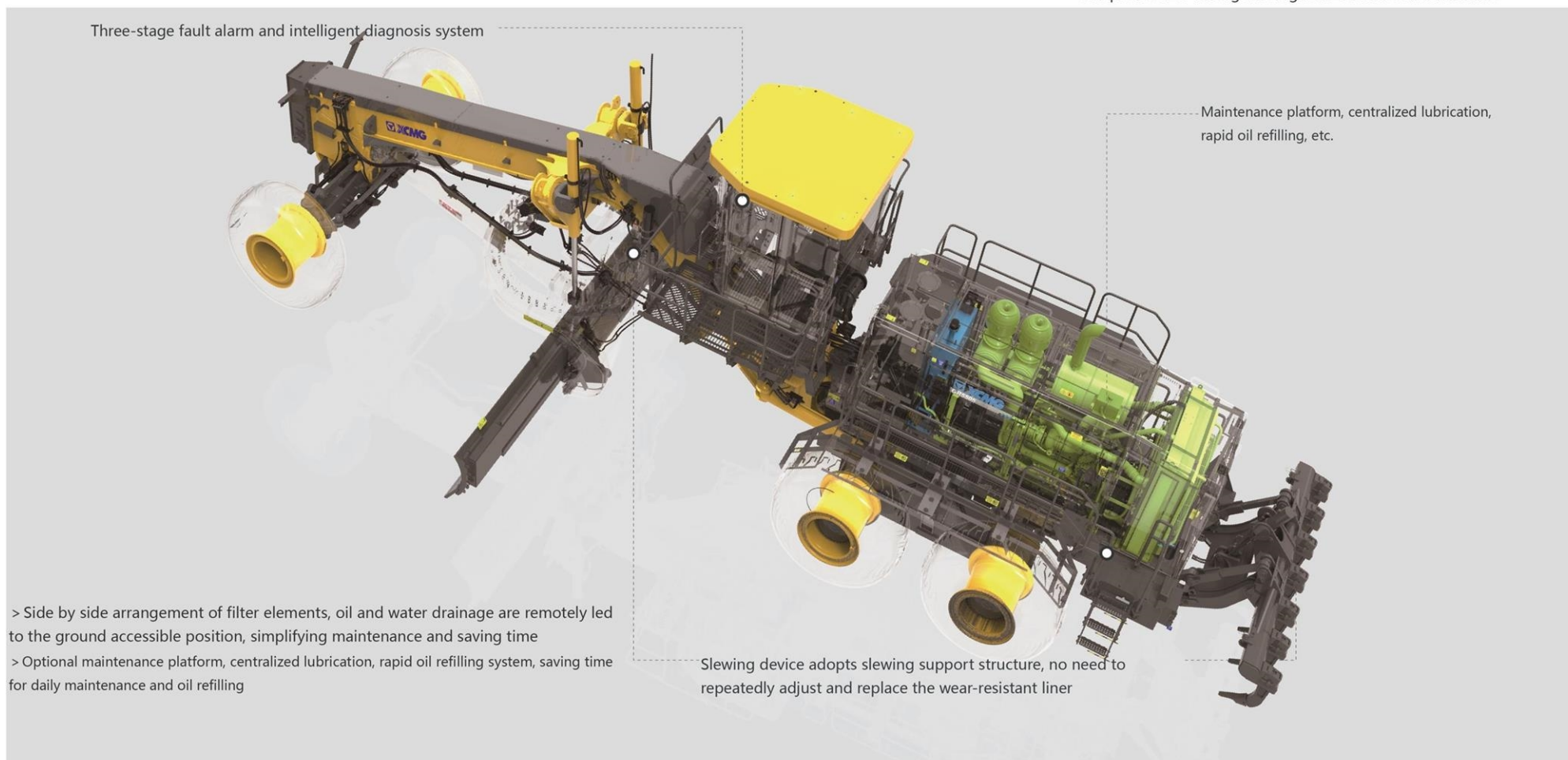


- > The Cabin pressurizer will circulate cabin air which will prevent dust from entering the cab to keep the cab clean; dual-use air conditioning with three-dimensional all-round air ducts can obtain a comfortable temperature for human body in winter and summer

CONVENIENT MAINTENANCE

- > Modular design, the disassembly and reinstallation of key components will not cause damage to other components
- > Slewing device adopts slewing support structure, no need to repeatedly adjust and replace wear-resistant pads, saving maintenance time and cost
- > Fluid level monitoring to prevent damage to key components caused by low fluid level, and the prompt information can be obtained from the display in the cab, and will form a diagnostic code

- > Side-by-side arrangement of filter elements, oil and water drainage are remotely led to the ground accessible position, simplifying maintenance and saving time
- > Three-stage fault alarm and intelligent diagnosis system, alerting the operator when a fault occurs, forming a fault code, and providing a complete set of intelligent diagnosis software and hardware



SAFETY COMPLIANCE

- > Speed-sensitive steering system, which increases steering sensitivity as driving speed increases, thus increasing steering control and safety
- > Wet braking, increased braking torque, and equipped with brake accumulator, more reliable braking effect, longer service life

- > Hydraulic locking, to avoid the misoperation of the hydraulic machine when the vehicle is in transit, high-speed driving

- > Auxiliary steering, when the steering pressure drops, automatically combined with the electric pump, the operator can safely drive the machine to the stop position
- > Equipped with channels, platforms and handrails to improve the safety of personnel entering the cab and overhauling equipment

- > The optional automatic fire extinguishing system can automatically start to extinguish the fire when a fire accident occurs in the vehicle to avoid major fire damage to personnel and vehicles.
- > Optional 360 ° panoramic image, to achieve seamless stitching of the entire vehicle surrounding area, to ensure the safety of equipment start-up and shutdown

Speed-sensing steering system, with the increase of driving speed to reduce the steering sensitivity

Back-up camera, effectively reducing the blind spot in the rear view



Auxiliary steering, when the steering pressure drops, automatically combined with electric pump

Configured access, platform and handrail

Ground Isolation Switches

PARAMETER

| Item | | GR5505 | |
|-----------------------|---|--|-------|
| Basic parameter | Engine type | 2806D-E18TA | |
| | Rated power/Speed | 447/2100rpm | |
| | Machine dimension(standard) | 16430×4460×4810mm | |
| | Machine weight(standard) | 74000kg | |
| | Tire specification | 29.5R29 | |
| | Ground clearance (Front axle) | 890mm | |
| | Wheel base | 3650mm | |
| | Axle distance between front and rear | 10460mm | |
| Performance parameter | Forward speed | 4.6、5.9、8.7、11.7、17.7、25.1、32.2、42.7km/h | |
| | Rearward speed | 4.5、8.7、17.2、32.6km/h | |
| | Traction force f=0.75 | ≥390kN | |
| | Maximum gradeability | ≥30% | |
| Working parameters | Inflation pressure of tire | 0.5Mpa | |
| | Work system pressure | 25MPa | |
| | Maximum steering angle of front wheel | ±48° | |
| | Allowable angle of inclination of front wheel | ±18° | |
| | Maximum swinging angle of front axle | ±16° | |
| | Maximum swinging angle of front axle | 前20°、后 20° | |
| | Maximum swinging angle of front axle | ±25° | |
| | Minimum turning radius | 12.5m | |
| | Blade | Maximum lifting height | 460mm |
| | | Maximum scraping depth | 553mm |
| Maximum tilt angle | | 55° | |
| Cutting angle | | 40° | |
| Angle of revolution | | 340° | |
| Length × Height | | 7300×1025mm | |

MACHINE DIMENSION

