

All Rights Reserved

Materials and specifications are subject to change without notice. Featured machines in photos may include additional equipment. See your XCMG dealer for available options.



Hydraulic Excavators
XE500LC



XCMG MINING EQUIPMENT AUSTRALIA PTY LTD
Add:31-33 Westpool drive, Hallam, Vic,3803,Australia
Phone: +61 0411 591 394
Email: royrossini@xcmg.com
xcmgaustralia@xcmg.com

XUZHOU CONSTRUCTION MACHINERY GROUP IMP.& EXP.CO., LTD
Add:NO.1,Tuolanshan Road, Xuzhou Economic Developing Zone,Jiangsu, China 221004
Tel: +86 (0) 516 8773 9228
Fax: +86 (0) 516 8773 9230
E-mail: royrossini@xcmg.com xcmgaustralia@xcmg.com

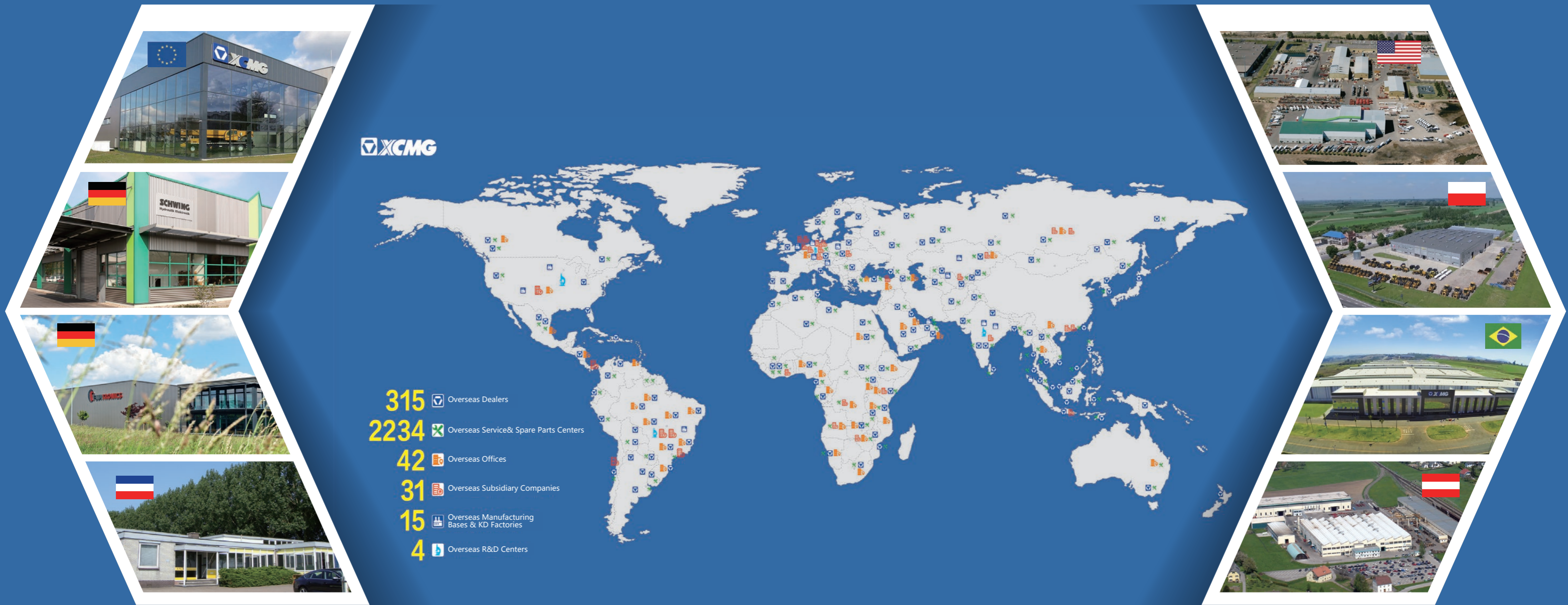
www.xcmg.com

Specifications and designs are subject to change without notice. Machines shown may include optional equipment.

HWA500-10-23-01

Operation weight: 52,000 kg
Rated power/speed: 336 kW/1,800 rpm
Bucket capacity: 2.8 m³





INTRODUCTION OF XCMG

Founded in 1943, XCMG is a multinational corporation with the most comprehensive range of competitive, influential products in the construction machinery industry. Our business covers eight key areas: construction machinery, heavy trucks, mining machinery, sanitation machinery, machinery components, construction, finance, and the ICT industry. XCMG has established a global R&D network with a total of six centers in China, the US, Germany, Brazil and India, with China national technology center at its core. In addition to a number of manufacturing bases in China, the US, Germany, the Netherlands, Poland, Austria, Brazil, India, and Uzbekistan, we possess two complete machine brands (XCMG, Schwing), and several component brands including FT, AMCA. It is the strength of this global R&D network and manufacturing operations that has made XCMG the industry leading global construction equipment manufacturer that it is today. For more than 30 years, XCMG has been sowing the seeds of overseas development as the No. 1 exporter in China's construction machinery industry. Today, we have 42 branches and offices, 315 distributors, 526 contractors in 191 countries and regions worldwide and are still growing rapidly.

XCMG IN AUSTRALIA

Since its foundation in 2006, XCMG is gradually establishing a complete network including: local distribution, supply chain management and an integrated customer services and training. Nowadays, with one headquarter in Adelaide, XCMG Australia has 6 professional dealers focusing on construction equipment business. Meanwhile, XCMG has deep connections with mining giants like Rio Tinto, BHP and MMG in Australia.

Our local professional team and cutting-edge innovation platform guarantee that our products are carefully crafted to the smallest detail according to the diverse needs of Australian customers.



➤ **Comfortable operating experience**

- Rear camera provide better view.
- Air suspension seat equipped with electric heating function.

➤ **Excellent after-sales service**

- Global after-sales service system and quick response mechanism.
- Real-time technical consultation and maintenance.

➤ **Multiple applications**

- Different boom, arm and bucket combinations can adapt to as many working conditions as possible.
- Multi-functional work tool system can meets various operational requirements including digging, breaking, thump plier and so on.

➤ **Standard fully guard and handrails**

- Fully front guard and roof guard.
- Handrails on top of upper frame (full protection type)

➤ **Ecological and economical**

- Electronically controlled positive flow hydraulic system.
- Customized powerful Cummins engine.
- Operations in ECO mode can save more fuel for you.

➤ **Safe and durable**

- Upgrade heavy duty long crawler undercarriage for high stability.
- Strengthened chain links, upper rollers, and lower rollers with full track protection for additional reliability.
- ROPS and OPG certified cab and rear camera for additional safety.



Ecological And Economical

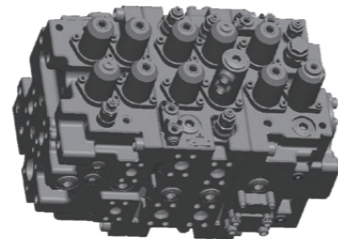
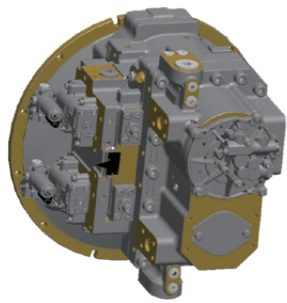
Customized-curve Cummins engine provides more powerful with 3 %-9 % reduction of fuel consumption and 15 %-26 % reduction of engine stall. Stage III emission and low-speed with high-torque features provide more efficiency, energy saving, and environmental protection.



XE500LC adopts electronically controlled positive flow hydraulic system for rapid responses and sensitive operations.

Original imported large replacement main pump and main valve can effectively improve 3 %-5 % output efficiency with heavy load.

The combination of double swing motors makes the XE500LC more powerful and more efficient.



More Comfortable and Safe

- 1 Brand-new Air conditioner and heater: Indoor and outdoor ambient temperature can be perceived through sensors and automatically adjusted to comfortable temperature. A good comfortable environment for operators can be provided with the cooperation of a multi-position adjustable air outlet.
- 2 Comfortable high-performance seats: air suspension seats with electric heating functions can achieve multi-dimensional adjustment and isolation of vibration waves.
- 3 New generation of instruments: high-end 7-inch large screen display, detailed page layout, clear picture quality, reserved video display function in addition to main functions, and supporting a variety of video formats.



Specially designed reinforced left and right side body bump guards with thicker plate.

An undercarriage built for unbeatable durability with reinforced guide frame, HD track shoes of thick steel plate, and increased durability of the track links.

Boom and arm reinforced for extreme conditions with thicker plate, XCMG patent arm T-bushes, and strengthened forged parts.



Standard ROPS (Roll-Over-Protective Structure) and OPG-compliant cab with front and top guards to ensure greater safety for the operator.

Right side camera and rear view camera fitted as standard for easy safety checks around the machine.



Specially designed long strengthened strike beams installed to prevent damage to dipper arm.

The independently developed multi-functional intelligent work tool control system can realize crushing, shearing, cleaning, compacting, milling, transporting, pinching, grasping, scraping, loosening, lifting, and other operations, and can truly integrate multiple operations into one machine.

With first-rate digging force, the machine can be fully competent under complicated working conditions.

► Maintenance And Service

Centralized electrical box, air filter, oil filter and pilot filter are accessible for maintenance within hand reach. Long maintenance period: Self-lubricating bearings are used at hinges of working devices, whose maintenance period can reach 500 hours. Maintenance periods of engine oil, oil filter element, and fuel filter element can be doubled to 500 hours using XCMG's proprietary technologies, so the maintenance periods are greatly prolonged. A wide range of after-sales service system, quick-response rescue mechanism to ensure that you use at ease.



► Main Specifications

■ Engine

	XE500LC
Model	QSX12
Direct injection	√
Four strokes	√
Water cooling	√
Turbo-charging	√
Air to air intercooler	√
No. of cylinders	6
Rated power/speed	336 kW/1,800 rpm
Maximum torque/speed	1,898 N·m/(1,200-1,600) rpm
Displacement	11.8 L

■ Hydraulic system

	XE500LC
Main pump	Two piston pumps
Rated flow of main pump	2×384 L/min
Main safety valve pressure	34.3/37 MPa
Travel system pressure	34.3 MPa
Swing system pressure	29 MPa
Pilot system pressure	3.9 MPa

■ Oil capacity

	XE500LC
Fuel tank capacity	650 L
Hydraulic tank capacity	430 L
Engine oil capacity	36 L

■ Main performance

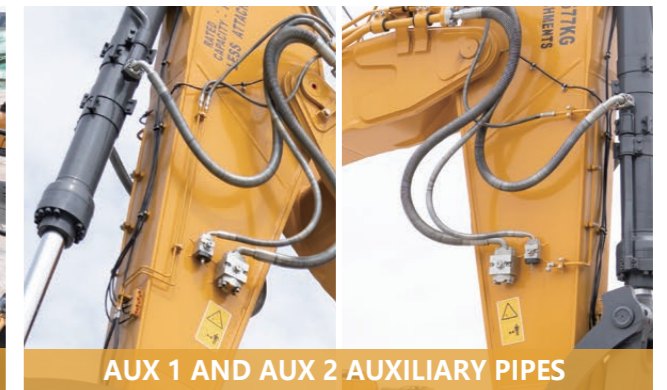
	XE500LC
Travel speed (H/L)	5.4/3.2 km/h
Swing speed	9.2 r/min
Gradeability	≤35 °
Ground pressure	92 kPa
Bucket digging force	269 kN
Arm digging force	205 kN
Maximum tractive force	370 kN

■ Standard

	XE500LC
Length of boom	6,900 mm
Length of arm	2,900 mm
Bucket capacity	2.8 m ³

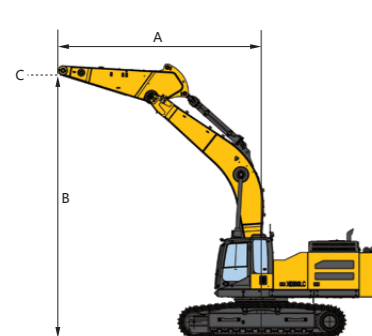
■ Optional

	XE500LC
Length of boom	/
Length of arm	/
Bucket capacity	/



XE500LC

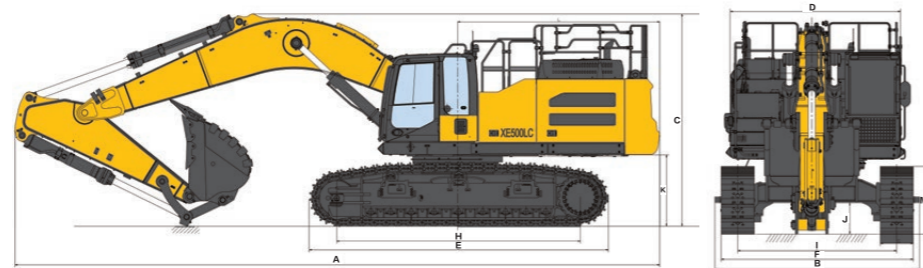
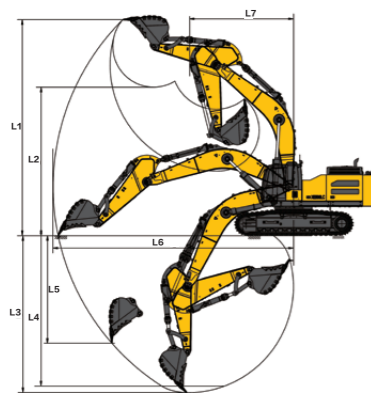
B	A	3 m		4.5 m		6 m		7.5 m		9 m		At Max. Reach		MAX.
		Over front	Over side or 360°	Over front	Over side or 360°	Over front	Over side or 360°	Over front	Over side or 360°	Over front	Over side or 360°	Over front	Over side or 360°	
9 m	kg											*9,895	*9,895	6.9 m
7.5 m	kg							*10,933	*10,933			*9,240	*9,240	8.1 m
6 m	kg					*12,666	*12,666	*11,320	*11,320			*9,035	8,911	8.9 m
4.5 m	kg			*19,143	*19,143	*14,432	*14,432	*12,164	11,262	*10,927	8,685	*9,121	8,101	9.4 m
3 m	kg			*16,748	*16,748	*16,295	14,621	*13,132	10,833	*11,348	8,505	*9,464	7,689	9.7 m
1.5 m	kg			*12,521	*12,521	*17,608	14,062	*13,914	10,554	*11,702	8,331	*10,103	7,577	9.7 m
Ground Line	kg			*18,015	*18,015	*18,038	13,764	*14,258	10,339	*11,746	8,218	*11,088	7,754	9.4 m
-1.5 m	kg	*14,176	*14,176	*22,649	20,490	*17,566	13,685	*13,960	10,263			*11,204	8,291	8.9 m
-3 m	kg	*24,598	*24,598	*20,353	*20,353	*16,099	13,786	*12,661	10,349			*11,167	9,412	8.1 m
-4.5 m	kg			*16,538	*16,538	*13,035	*13,035					*10,648	*10,648	6.9 m



Over front
Over side or 360°

A- Reach from swing centerline to arm top
B- Arm top height above/below ground
C- Lift point

The mass of slings and any auxiliary lifting devices shall be deducted from the rated load to determine the net load that may be lifted. Lift capacities are based on the machine standing on a firm, uniform supporting surface. The user shall make allowances for job conditions such as soft or uneven ground. The operator should be fully acquainted with the operator's manual and the operating safety manual furnished by the manufacturer before operating the machine.



Working scope

	XE500LC
L1 Max. digging height	10,980 mm
L2 Max. dumping height	7,630 mm
L3 Max. digging depth	7,755 mm
L4 Maximum depth cut for 2,240 mm (8 ft) level bottom	7,615 mm
L5 Maximum vertical wall digging depth	6,805 mm
L6 Max. digging radius	11,810 mm
L7 Min. swing radius	3,920 mm

Appearance size

	XE500LC
A Overall length	12,310 mm
B Overall width (with pedal)	3,574 mm
C Overall height	4,100 mm
D Width of platform	3,095 mm
E Track length	5,385 mm
F Overall width of chassis (without pedal)	3,340 mm
G Track shoe width	600 mm
H Wheel base of crawler	4,400 mm
I Track gauge	2,740 mm
J Counterweight clearance	1,359 mm
K Min. ground clearance	518 mm
L Min. tail swing radius	3,645 mm
M Track height	1,225 mm

Standard and optional equipment

Engine

Engine model	QSX12
Emission stage	GB III
Automatic preheating	●
Fuel-water separator with water level instruction sensor	●
Fuel-water separator with heater(24 V)	○
Axial seal air cleaner	●
Air prefilter	●
The cooling assembly in 50 °C ambient temperature	●
Dust screen of radiator	●
Fuel marker	●
Oil-water quickly release device	●
Coolant heater (fuel type)	○
Hydraulic independent dissipate heat	●
Fuel filling pump	○
Air pressure difference instructor	●
Auto-idle	●

Hydraulic system

Breaker pipe	●
Quick coupler pipe	●
Thumb	●
Hydraulic oil ISO VG 46	●
Hydraulic oil ISO VG 32	○
Hydraulic oil ISO VG 68	○
Electric proportional joystick on the left and right	●
Gauge pressure monitor	●

Cab & Interior

Pressurized cab	●
Air suspension seat with heater	●
Control box on the left and right	●
Rain visor (It is not mounted when front upper protective net exists)	○
Front windshield divided 70/30 ratio	●
Double laminated windshield and other toughened windows	○
Sliding upper window on the door	●
Bi-directional air outlet air conditioner with defroster [automatic type][pressurization function]	●
Colour LCD with displaying warning information, filter / liquid replacement information and working hours	●
Double stereo speaker	●
Cup holder	●
Coat hook	●
Washable floor mat	●
Safety belt	●
High and low travel speed switch	●
One-key boost model	●
Sun visor	●
Top hatch	●
Multi-gear windshield wiper with intermittent feature	●
File package	●
Emergency exit on rear windows	●
Hammer for emergency escape	●

Lubrication system

Arm assembly	●
--------------	---

Undercarriage

Track guard located in left and right of track	●
2×9 bottom roller	●
2×2 carrier roller	●
Tow ring on the bottom frame	●
Track with 2×50joint,600 mm (24") double grouser shoes	●
Guard kits: bottom sealing plate of undercarriage, sealing plate of traveling motor	●

Electrical system

Battery 2×650 CCA(4 accumulator)	●
70 A alternator	●
7.5 kW starter motor	●
12 V power port	●
5 V USB port	●
Emergency stop switch	●
Rightview camera	○
Rearview camera	●
DAB Bluetooth digital radio	○
Travel alarm with switch	●
Rotating beacon	●
Two front working light on the cab (LED)	●
Two working lights on the working device(LED)	●
Interior light in the cab	●

Security configuration

Anti-hit beam	●
The lock of the cab door and cabin	●
Warning horn	●
The quick coupler button with warning	●
Isolation plate between engine and pump chamber	●
Battery disconnect switch	●
Safety handrail and pedal	●
Anti-skid plate/ anti-skid paste	●
Hydraulic safety locking lever	●
Left and right rearview mirrors	●
Counterweight rearview mirror	Counterweight camera
Anti-burst valve on the boom	●
Anti-burst valve on the arm	●
Roll over protective structure	●
Fall over protective structure	●
Upper protective net on front windshield	●
Lower protective net on front windshield	●

Work device

Boom 6.9 m	●
Arm 2.9 m	●
Rock bucket 2.8 m³	●

Counterweight

9.5 t counterweight	●
---------------------	---

● - Standard configuration ○ - Optional

Optimum services , XCMG Guaranteed



XCMG-approved attachments



Genuine parts



Extension of warranty



Financial solutions



Maintenance contract



Telematics

Professional Integrated Complete Solutions

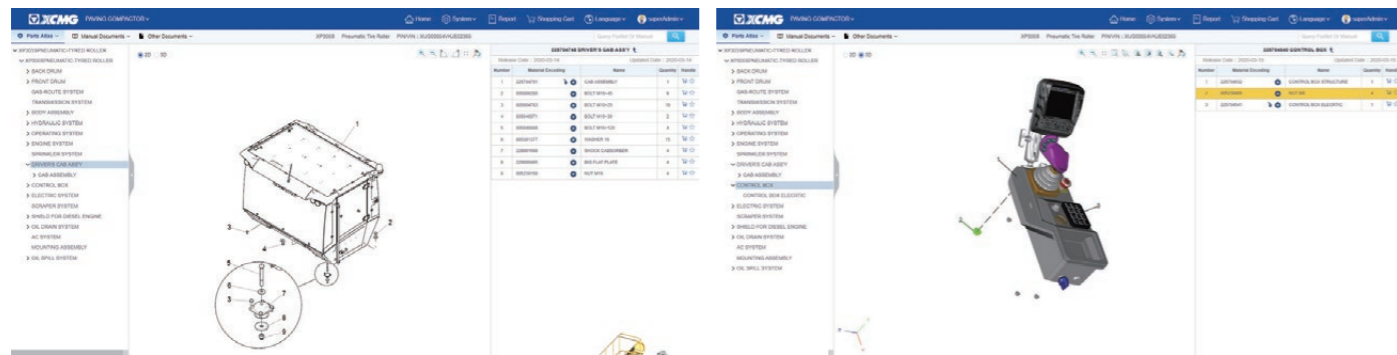
The XCMG group has built a strong reputation based on the quality, reliability and durability of its construction machinery. What's more, XCMG has gradually established a service network to constantly provide its local integrated and highly efficient complete solutions for all customers.

Full Range of Services Ready for you

In order to respond to your needs as fast as possible, XCMG experts are on their way to your job site from one of our facilities near you. Full range of services are available in order to reduce your total cost of ownership and increase your revenue.



XCMG Global Spare Parts System



Mobile cranes



Excavators



Aerial work platforms



Wheel loaders



Road machinery

