

All Rights Reserved

Materials and specifications are subject to change without notice. Featured machines in photos may include additional equipment. See your XCMG dealer for available options.



Hydraulic Excavators  
**XE380LC**



**XCMG MINING EQUIPMENT AUSTRALIA PTY LTD**  
Add:31-33 Westpool drive, Hallam, Vic,3803,Australia  
Phone: +61 0411 591 394  
Email: royrossini@xcmg.com  
xcmgaustralia@xcmg.com

**XUZHOU CONSTRUCTION MACHINERY GROUP IMP.& EXP.CO., LTD**  
Add:NO.1,Tuolanshan Road, Xuzhou Economic Developing Zone,Jiangsu,  
China 221004  
Tel: +86 (0) 516 8773 9228  
Fax: +86 (0) 516 8773 9230  
E-mail: royrossini@xcmg.com xcmgaustralia@xcmg.com

[www.xcmg.com](http://www.xcmg.com)

Specifications and designs are subject to change without notice. Machines shown may include optional equipment.

HWA380-10-23-01

Operating weight: 38,200 kg  
Rated power: 214 kW/2,100 rpm  
Bucket capacity: 1.9 m<sup>3</sup>-2.1 m<sup>3</sup>





## INTRODUCTION OF XCMG

Founded in 1943, XCMG is a multinational corporation with the most comprehensive range of competitive, influential products in the construction machinery industry. Our business covers eight key areas: construction machinery, heavy trucks, mining machinery, sanitation machinery, machinery components, construction, finance, and the ICT industry. XCMG has established a global R&D network with a total of six centers in China, the US, Germany, Brazil and India, with China national technology center at its core. In addition to a number of manufacturing bases in China, the US, Germany, the Netherlands, Poland, Austria, Brazil, India, and Uzbekistan, we possess two complete machine brands (XCMG, Schwing), and several component brands including FT, AMCA. It is the strength of this global R&D network and manufacturing operations that has made XCMG the industry leading global construction equipment manufacturer that it is today. For more than 30 years, XCMG has been sowing the seeds of overseas development as the No. 1 exporter in China's construction machinery industry. Today, we have 42 branches and offices, 315 distributors, 526 contractors in 191 countries and regions worldwide and are still growing rapidly.

## XCMG IN AUSTRALIA

Since its foundation in 2006, XCMG is gradually establishing a complete network including: local distribution, supply chain management and an integrated customer services and training. Nowadays, with one headquarter in Adelaide, XCMG Australia has 6 professional dealers focusing on construction equipment business. Meanwhile, XCMG has deep connections with mining giants like Rio Tinto, BHP and MMG in Australia.

Our local professional team and cutting-edge innovation platform guarantee that our products are carefully crafted to the smallest detail according to the diverse needs of Australian customers.



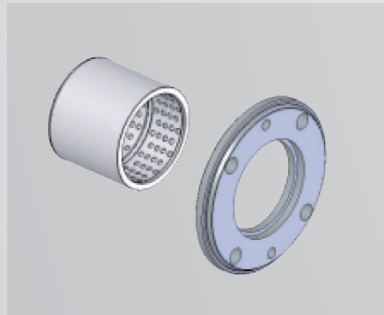


Reinforced rock bucket and teeth



Specially designed long strengthened strike beams installed to prevent damage to dipper arm.

Specially designed flange pin seat of dipper arm end with long term worn interval.



Heavy duty undercarriage with reinforced X-frame, rollers and chains.



## ► More energy-saving and environment-friendly

### Lower fuel consumption

XCMG's special engine adopts a customized torque curve to provide large torque output at low speed, and while providing rush-in power, it greatly reduces fuel consumption and meets the power output and fuel economy under heavy load mode.

The high-pressure common rail system achieves the best fuel injection control and effectively improves the combustion efficiency.

### Premium hydraulic control system

Electronically controlled positive flow hydraulic system for rapid responses and sensitive operations.

Large replacement main pump and main valve for effective productivity.

Aux 2 controlled with independent PTO(power take off) pump for excellent control performance.



## ► More Efficient Return

### Efficient main valve

It has outstanding advantages such as "high reliability, small pressure loss, high flow distribution efficiency, and smooth movement", and has greatly improved in energy saving, high efficiency, and controllability.



### Powercore air cleaner

Satisfy the working conditions of medium and heavy grayscale.

Low intake resistance reduces engine fuel consumption; prevents premature engine wear, maintains life-cycle filtration of more than 99.99%, and integrates detachable pre-filtering function.

► Silicone oil seal shock absorber is adopted, and the rigidity of the cab floor is improved to reduce the shaking of the cab and reduce the operator's fatigue.



### 1 Multifunction Color Display

Provide operators with comprehensive and easy-to-read machine information, comprehensively monitor the working status of the engine and hydraulic system, and query various machine operation and fault diagnosis information.

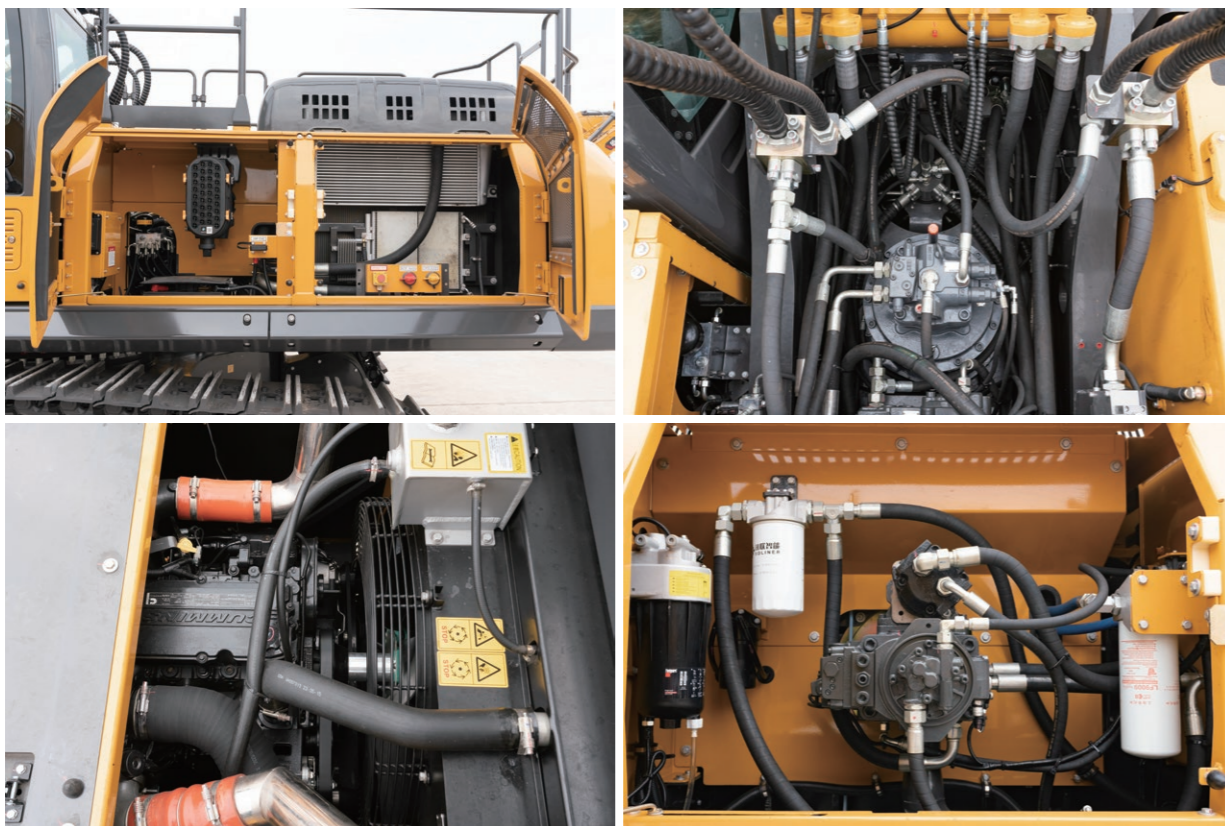
### 2 Smart air conditioner

It can sense the indoor and outdoor temperature and sunshine intensity, and intelligently adjust the air volume and compressor displacement to ensure that the driver works in a comfortable environment.

### 3 Emergency stop switch

In case of emergency, press the emergency stop switch to turn off the fire in an emergency, effectively protecting the safety of personnel.

- Very convenient access to radiators and cooling devices makes cleaning much easier.
- Various parts of the engine are accessible from above and through the side panels.



Powercore air cleaner

Integrated electrical box

## ■ Engine

	XE380LC
Model	QSL9
Direct injection	√
Four strokes	√
Water cooled	√
Turbocharged	√
Air to air intercooler	√
Number of cylinders	6
Rated power/speed (ISO)	214/2,100 kW/rpm
Maximum torque/speed	1,344/1,300 N.m
Piston displacement	8.9 L

## ■ Hydraulic system

	XE380LC
Main pump	Two variable pumps
Rated flow of main pump	2×330 L/min
Relief valve setting pressure	34.3/37 MPa
Travel system pressure	34.3 MPa
Swing system pressure	26.5 MPa
Pilot system pressure	3.9 MPa

## ■ Oil capacity

	XE380LC
Fuel tank capacity	660 L
Hydraulic tank capacity	350 L
Engine oil capacity	30 L

## ■ Main performance

	XE380LC
Travel speed (H/L)	5.6/3.3 km/h
Swing speed	9.6 r/min
Gradeability	≤35 °
Ground pressure	69 kPa
Bucket digging force	273 kN
Arm digging force	180 kN
Maximum tractive force	285 kN

## ■ Standard

	XE380LC
Length of boom	6,400 mm
Length of arm	3,200 mm
Bucket capacity	1.9 m <sup>3</sup> (Rock Bucket)

## ■ Optional

	XE380LC
Length of boom	-
Length of arm	2,670 mm
Bucket capacity	2.1 m <sup>3</sup> (Strengthen bucket)





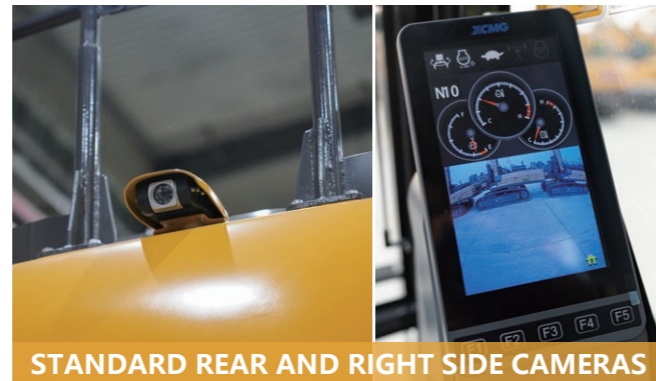
# Safety and convenience



REFLECTIVE TAPE



FULL FRONT GUARD AND TOP GUARD



STANDARD REAR AND RIGHT SIDE CAMERAS



STANDARD LED LIGHTS



SUNROOF, SUNROOF CURTAIN AND FRONT CURTAIN



STANDARD BOOM AND ARM ANTI-DROP VALVES



# Safety and convenience



AM/FM BLUETOOTH (HANDS-FREE) RADIO



POWERFUL AC



HANDRAILS AND GUARD RAILS



AUX 1 AND AUX 2 AUXILIARY PIPES



ACCESSABLE EMERGENCY STOP BUTTONS

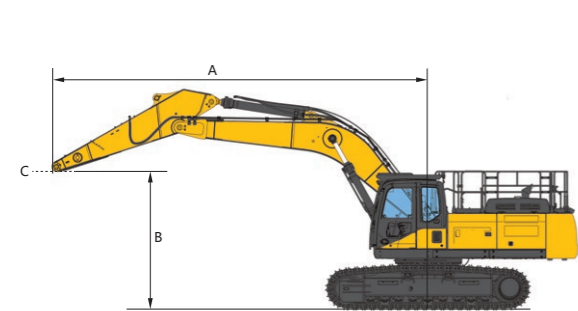


REAR VIEW MIRROR



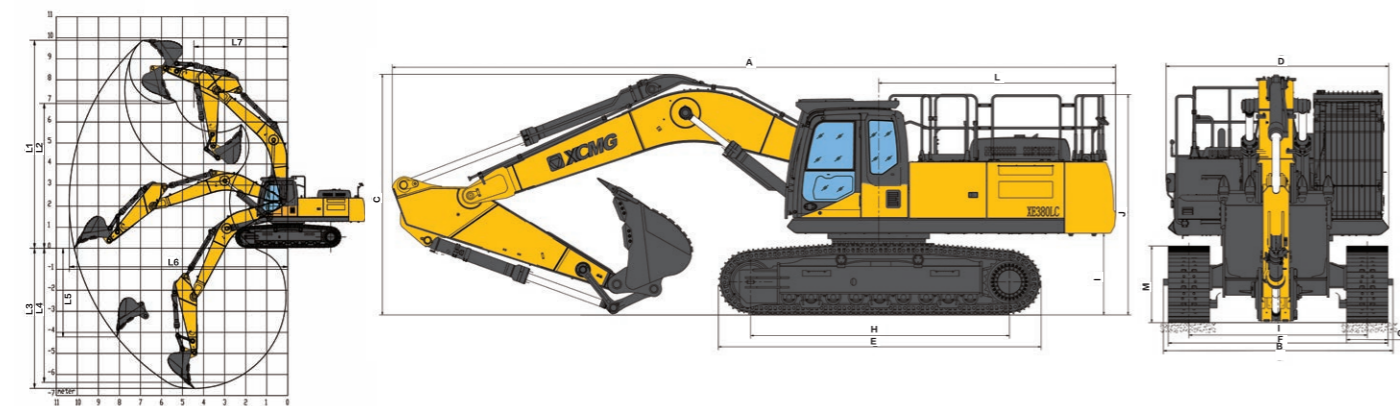
## XE380LC

B	A	1.5 m		3 m		4.5 m		6 m		7.5 m		9 m		At Max.Reach	
		☺	☹	☺	☹	☺	☹	☺	☹	☺	☹	☺	☹	☺	☹
9 m	kg														
7.5 m	kg									*8,767	7,766			*8,130	7,605
6 m	kg									*9,702	7,692			*7,993	6,349
4.5 m	kg					*14,630	*14,630	*11,826	10,299	*10,435	7,464	*8,117	5,672	*8,136	5,674
3 m	kg					*18,574	14,408	*13,705	9,737	*11,407	7,178	9,090	5,548	*8,537	5,322
1.5 m	kg					*21,348	13,538	*15,333	9,257	11,625	6,911	8,944	5,417	8,580	5,206
GroundLine	kg					*22,272	13,181	15,872	8,957	11,410	6,723	8,846	5,329	8,816	5,312
-1.5 m	kg			*16,544	*16,544	*21,856	13,124	15,734	8,842	11,321	6,645			9,527	5,697
-3 m	kg	*18,911	*18,911	*25,072	*25,072	*20,281	13,259	*15,475	8,894	11,399	6,713			11,075	6,548
-4.5 m	kg			*22,794	*22,794	*17,086	13,597	*12,864	9,154					11,878	8,521



☺ : Over front  
☹ : Over side or 360°

A- Reach from swing centerline to arm top  
B- Arm top height above/below ground  
C- Lift point  
The mass of slings and any auxiliary, lifting devices shall be deducted from the rated load to determine the net load that may be lifted. Lift capacities are based on the machine standing on a firm, uniform supporting surface. The user shall make allowances for job conditions such as soft or uneven ground. The operator should be fully acquainted with the operator's manual and the operating safety manual furnished by the manufacturer before operating the machine.



### Working scope

	XE380LC
L1 Maximum digging height	10,316 mm
L2 Maximum dumping height	7,437 mm
L3 Maximum digging depth	7,286 mm
L4 Maximum depth cut for 2,240 mm(8 ft) level bottom	71,09 mm
L5 Maximum vertical wall digging depth	4,629 mm
L6 Maximum digging radius	11,065 mm
L7 Minimum swing radius	4,405 mm

### Overall dimensions

	XE380LC
A Overall length	11,340 mm
B Overall width	3,200 mm
C Overall height	3,500 mm
D Width of platform	3,200 mm
E Track length	5,071 mm
F Overall width of chassis	3,190 mm
G Track width	600 mm
H Track wheelbase	4,040 mm
I Gauge	2,590 mm
J Counterweight clearance	1,227 mm
K Minimum ground clearance	550 mm
L Minimum tail swing radius	3,700 mm
M Track height	1,152 mm

## Standard and optional equipment

### Engine

Engine model	Cummins QSL9
Emission classes	GB III
Automatic preheating	●
Oil-water separator with water level indicator sensor	●
Radial seal air filter	●
Air Pre-Filter	●
High-temperature environment cooling components	●
Radiator dust net	●
Fuel level indicator	●
Oil-water quick release device	●
Coolant heater (fuel type)	○
Fuel pumps	○
Differential Air Pressure Indicator	●
IDLE	●

### Hydraulic system

Multi implement pipeline	●
Quick coupler lines	●
Hydraulic oil ISO VG 46	●
Hydraulic oil ISO VG 32	○
Hydraulic oil ISO VG 68	○
Left and right electric proportional joystick	●
Instrument pressure monitor	●

### Cab & Interior

Pressurized cab	●
Air Suspension Seat	●
Left and right control box	●
70/30 split front windshield	●
Single Layer Tempered Glass	●
Sliding upper door windows	●
Two-way air conditioner with defroster (automatic type) (pressurized function)	●
Color LCD display that shows warning messages, filter/fluid change information and hours of operation	●
Two stereo speakers	●
Cup holder	●
Coat hook	●
Washable floor mats	●
Seat belts	●
High-Low Speed Shift	●
One click power boost mode	●
Sunshade	●
Top sunroof	●
Intermittent multi-speed wiper	●
File folder	●
Rear window emergency exit	●
Emergency escape hammer	●

### Lubrication system

Centralization lubrication	●
----------------------------	---

### Undercarriage

Three track grippers to the left and right of the track	●
2 × 9 track roller	●
2 × 2 carrier roller	●
Chassis Traction Ring	●
Protect kits: chassis bottom plate, travel motor plate	●
2 × 49 joint track, 600 mm (24 ") double grouser track shoes	●
700 mm (28") double grouser shoes	○
800 mm (31") double grouser shoes	○
600 mm (24") triple grouser shoes	○
700 mm (28") triple grouser shoes	○
800 mm (31") triple grouser shoes	○

### Work device

Boom 6.4 m	●
Arm 3.2 m	●
Rock bucket 1.9 m³	●

### Electrical system

Battery 2 x 850 CCA (2 batteries)	●
70 A alternator	●
8.5 kW starter motor	●
12 V power socket	●
5 V USB interface	●
Emergency stop switch	●
Right camera	○
Rear camera	●
DAB Bluetooth Digital Radio	○
Traveling buzzer with switch	●
Rotating alarm light	●
LED light cab front work light 2pcs	●
Work device headlight LED 2 pcs	●
Interior light of the cab	●
Counterweight light	●

### Security Configuration

Anti-collision beam	●
Cab's lock	●
Alarm horn	●
Quick coupler button with alarm	●
Isolation plate between engine and oil pump compartment	●
Battery disconnect switch	●
Safety handrails and pedals	●
Anti-skid plate/anti-skid sticker	●
Hydraulic safety locking lever	●
Rearview mirrors	●
Counterweight camera	●
Anti-burst valve on the boom	●
Anti-burst valve on the arm	●
ROPS	●
OPG	●

### Counterweight

Counterweight	●
---------------	---

● - Standard configuration ○ - Optional

# Optimum services , XCMG Guaranteed



XCMG-approved attachments



Genuine parts



Extension of warranty



Financial solutions



Maintenance contract



Telematics

## Professional Integrated Complete Solutions

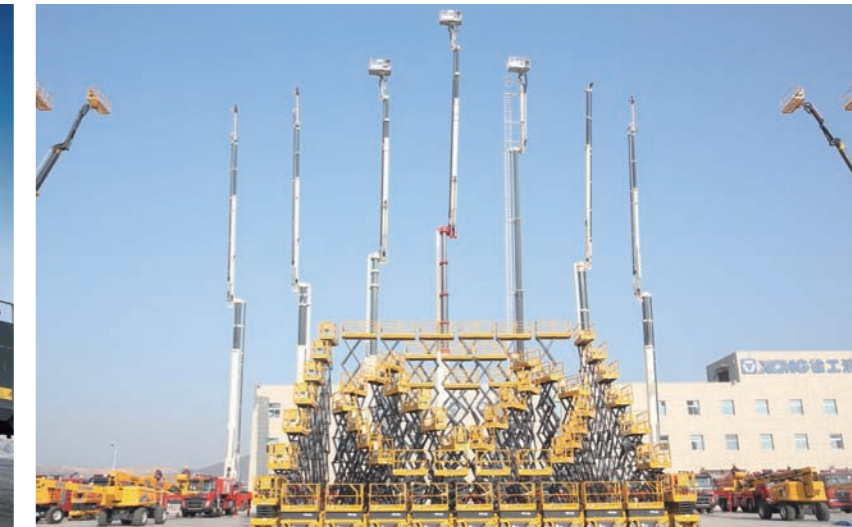
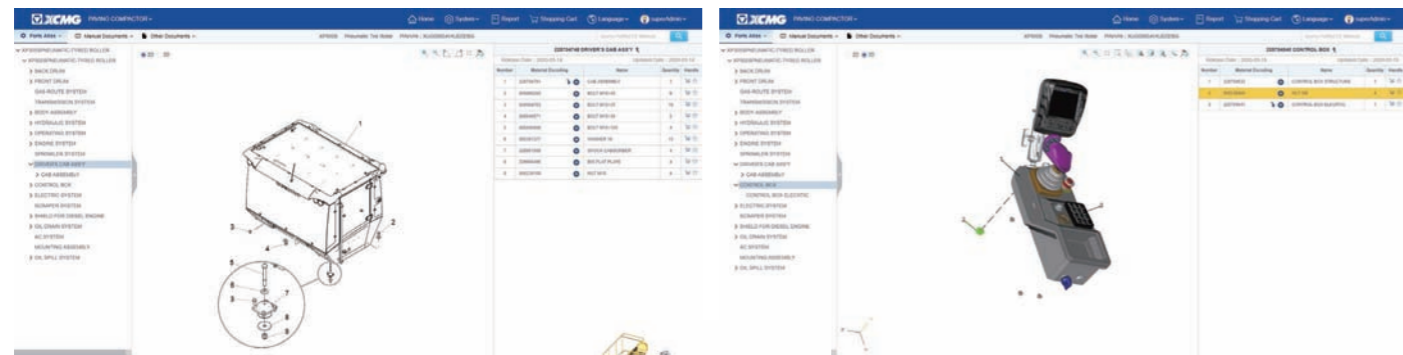
The XCMG group has built a strong reputation based on the quality, reliability and durability of its construction machinery. What's more, XCMG has gradually established a service network to constantly provide its local integrated and highly efficient complete solutions for all customers.

## Full Range of Services Ready for you

In order to respond to your needs as fast as possible, XCMG experts are on their way to your job site from one of our facilities near you. Full range of services are available in order to reduce your total cost of ownership and increase your revenue.



## XCMG Global Spare Parts System



Mobile cranes



Excavators



Aerial work platforms



Wheel loaders



Road machinery

