

All Rights Reserved

Materials and specifications are subject to change without notice. Featured machines in photos may include additional equipment. See your XCMG dealer for available options.



Hydraulic Excavators XE155UCR



XCMG MINING EQUIPMENT AUSTRALIA PTY LTD
Add:31-33 Westpool drive, Hallam, Vic,3803,Australia
Phone: +61 0411 591 394
Email: royrossini@xcmg.com
xcmgaustralia@xcmg.com

XUZHOU CONSTRUCTION MACHINERY GROUP IMP.& EXP.CO., LTD
Add:NO.1,Tuolanshan Road, Xuzhou Economic Developing Zone,Jiangsu, China 221004
Tel: +86 (0) 516 8773 9228
Fax: +86 (0) 516 8773 9230
E-mail: royrossini@xcmg.com xcmgaustralia@xcmg.com

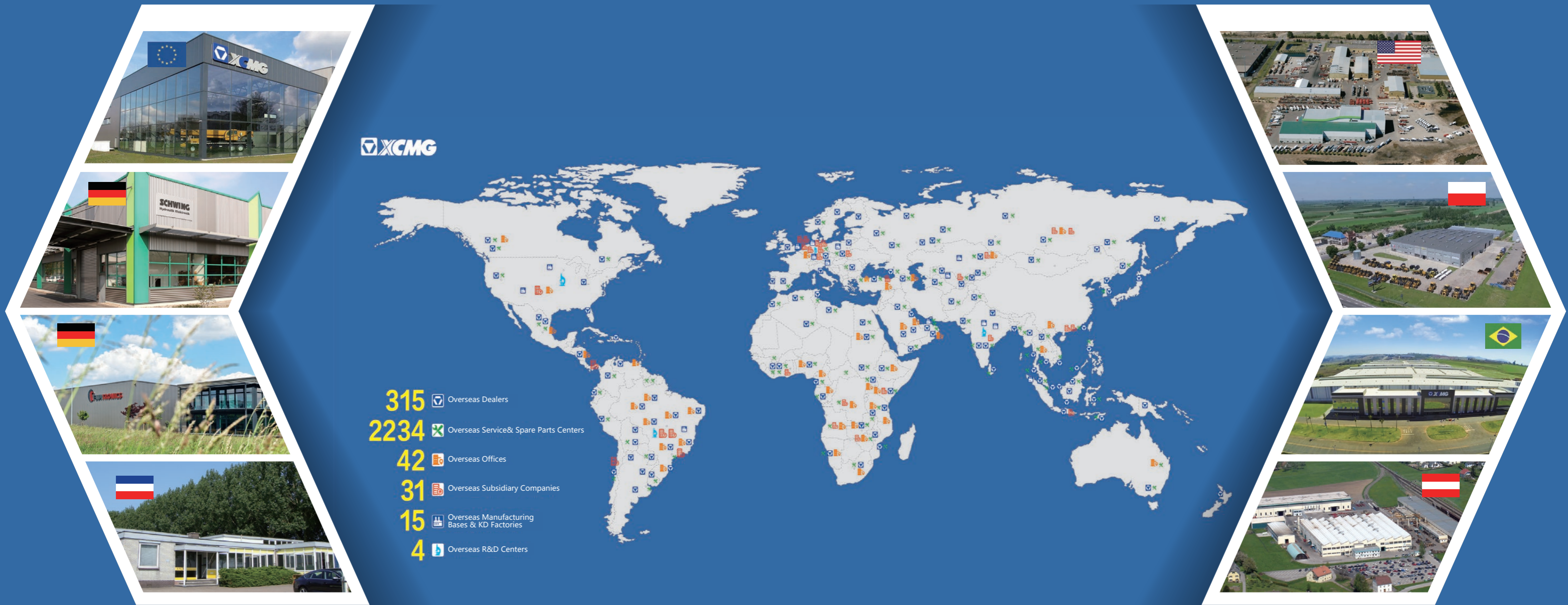
www.xcmg.com

Specifications and designs are subject to change without notice. Machines shown may include optional equipment.

HWA155-10-23-01

Operation weight: 16,600 kg
Rated power/speed: 93 kW/2,200 rpm
Bucket capacity: 0.65 m³





INTRODUCTION OF XCMG

Founded in 1943, XCMG is a multinational corporation with the most comprehensive range of competitive, influential products in the construction machinery industry. Our business covers eight key areas: construction machinery, heavy trucks, mining machinery, sanitation machinery, machinery components, construction, finance, and the ICT industry. XCMG has established a global R&D network with a total of six centers in China, the US, Germany, Brazil and India, with China national technology center at its core. In addition to a number of manufacturing bases in China, the US, Germany, the Netherlands, Poland, Austria, Brazil, India, and Uzbekistan, we possess two complete machine brands (XCMG, Schwing), and several component brands including FT, AMCA. It is the strength of this global R&D network and manufacturing operations that has made XCMG the industry leading global construction equipment manufacturer that it is today. For more than 30 years, XCMG has been sowing the seeds of overseas development as the No. 1 exporter in China's construction machinery industry. Today, we have 42 branches and offices, 315 distributors, 526 contractors in 191 countries and regions worldwide and are still growing rapidly.

XCMG IN AUSTRALIA

Since its foundation in 2006, XCMG is gradually establishing a complete network including: local distribution, supply chain management and an integrated customer services and training. Nowadays, with one headquarter in Adelaide, XCMG Australia has 6 professional dealers focusing on construction equipment business. Meanwhile, XCMG has deep connections with mining giants like Rio Tinto, BHP and MMG in Australia.

Our local professional team and cutting-edge innovation platform guarantee that our products are carefully crafted to the smallest detail according to the diverse needs of Australian customers.



➤ Greater multi-function capacities

- Bucket, breaker, rotating grapple, tilt bucket, mulcher, and other attachments can easily be operated or changed.
- Left joystick with standard function to hold hydraulic flow makes continuously operating easier.
- Precise adjustment of pressure and flow in auxiliary lines.
- Short tail design delivers more operation abilities.
- Improved excellent final trim performance.

Optional upgraded GTX series double locking hydraulic quick hitch



A PTO (Power Take Off) pump can provide additional hydraulic power to archive smooth operation performance.



Standard quick hitch hydraulic line, single/dual way auxiliary 1 hydraulic line, auxiliary 2 hydraulic line and drain hydraulic line for multi-purposes.

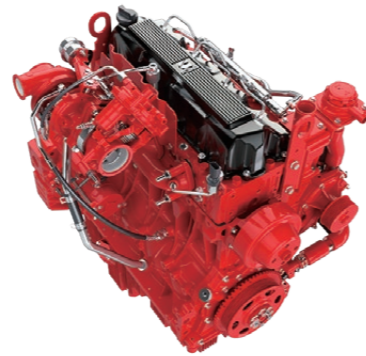


► Productive high power engine complies with Tier 3 emissions

Cummins engines are renowned for fuel efficiency and power technology, and XCMG has turned them specifically for construction machinery with our XICS(XCMG Intelligent Control System).

The power – Never compromise

The XE155UCR takes even the heaviest tasks with efficient, dependable performance that saves you time and money: Our customized environmentally friendly, high-torque and high-powered engine meets EU Stage IIIA (US EPA Tier III) emission standards. The new electronic positive flow hydraulic system that has fast response and good coordination matches with the engine system in a reasonable way that minimizes fuel consumption. The non-linear power control technology is introduced into the main pump that can reduce the light-load output flow and increase heavy-load system power, Light load energy increases by 4 % and heavy load efficiency increases by 3 %.



Fuel economy technology

A choice between 3 power modes and 8 attachment modes guarantees optimum performance under all conditions. Electronic control of fuel consumption. The auto-idle function reduces the engine speed when the controls are inactive for a preselected amount of time or when the safety lever is switched off. The engine will immediately return to its original selected speed when the operator touches the controls. For optimum cooling, the fan speed is controlled by a viscous clutch that results in lower fan noise with better fuel efficiency.



Upgraded hydraulic control

The enhanced hydraulic system provides more flow to the working tools by using both pumps in conflux, as well as increased total pump flow and smooth combined operation. Attachment relief back pressure greatly improved for more accurate operations. Return back pressure effectively decreased for excellent performance.

- 1 Operator's station
- 2 Ergonomic travel pedals
- 3 Heated air suspension seat
- 4 AC vents
- 5 Proportional hydraulic joystick
- 6 High quality speakers
- 7 Hammer control pedal
- 8 Engine stop switch
- 9 Color LCD monitor
- 10 Safety lever





Upgraded air suspension seat

Seat suspension absorbs vibration
 Seat recliner can be pushed back flat
 Double slides allow adjustment for optimum comfort

New hydraulic control

Newly upgraded electric control positive hydraulic flow system and joysticks with smoother, more precise movement and improved lever operability.

Ergonomic AC vents layout

AC vents are optimally designed around the cabin to provide more comfortable operation.

Lower vibration

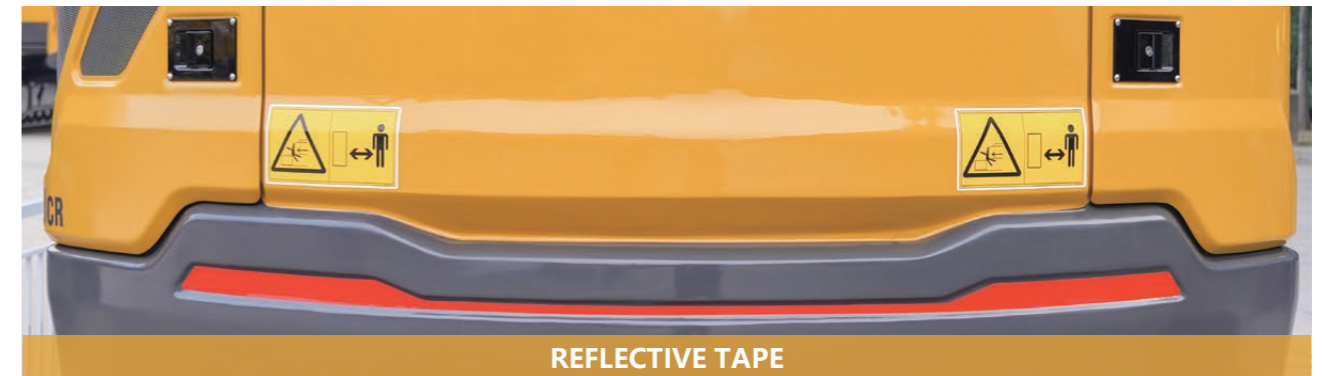
Silicone oil and Coil springs absorbers mounted under the cabin to provide excellent protection from vibration.

Clear wide view

Front and side glass windows help the operator have a clear wide and unobstructed view.

Interior devices adds to comfort and convenience

USB connector/12 V power outlet
 Large cup holder
 AM/FM Bluetooth(hands-free) radio



REFLECTIVE TAPE



FULL FRONT GUARD AND TOP GUARD



STANDARD REAR AND RIGHT SIDE CAMERAS



STANDARD LED LIGHTS



SUNROOF, SUNROOF CURTAIN AND FRONT CURTAIN



STANDARD BOOM AND ARM ANTI-DROP VALVES



AM/FM BLUETOOTH (HANDS-FREE) RADIO



POWERFUL AC



HANDRAILS AND GUARD RAILS



AUX 1 AND AUX 2 AUXILIARY PIPES



ACCESSABLE EMERGENCY STOP BUTTONS

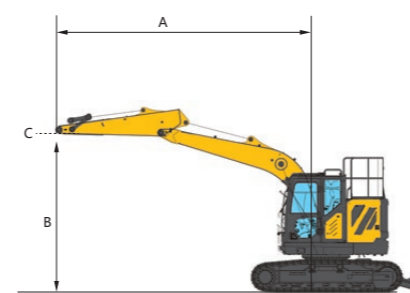


REAR VIEW MIRROR



XE155UCR lift capacity

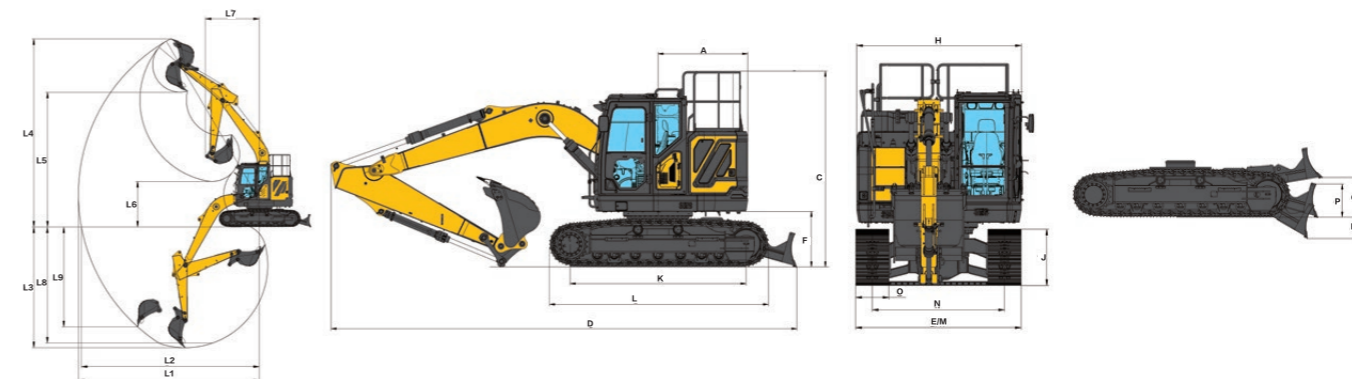
B \ A	1.5 m		3 m		4.5 m		6 m		7.5 m		At Max. Reach	
7.5 m	kg		*3,560	*3,560							*2,660	*2,660
6 m	kg				*3,270	*3,270					*2,140	*2,140
4.5 m	kg				*3,780	*3,780	*4,320	3,700	*3,180	2,360		
3 m	kg				*7,360	*7,360	*5,370	3,820	4,140	2,520		
1.5 m	kg				*8,260	*6,380	*6,360	3,570	4,140	2,380		
Ground Line	kg				*7,220	*6,440	6,080	3,420	4,120	2,340		
-1.5 m	kg	*5,240	*5,240	*10,550	*6,320	6,180	3,460	4,060	2,280			
-3 m	kg	*9,040	*9,040	*8,460	*6,330	*6,120	3,440					
-4.5 m	kg										*2,850	2,120
											*4,080	2,720



: Over front
 : Over side or 360°

A- Reach from swing centerline to arm top
 B- Arm top height above/below ground
 C- Lift point

The mass of slings and any auxiliary lifting devices shall be deducted from the rated load to determine the net load that may be lifted. Lift capacities are based on the machine standing on a firm, uniform supporting surface. The user shall make allowances for job conditions such as soft or uneven ground. The operator should be fully acquainted with the operator's manual and the operating safety manual furnished by the manufacturer before operating the machine.



Working scope

	XE155UCR	
L1	Max. digging reach	8,295 mm
L2	Max. digging reach at ground level	8,155 mm
L3	Max. digging depth	5,535 mm
L4	Max. digging height	8,630 mm
L5	Max. dumping height	6,185 mm
L6	Min. dumping height	2,090 mm
L7	Min. swing radius	2,475 mm
L8	Max. digging depth(8' level)	5,325 mm
L9	Max. vertical wall digging depth	4,580 mm

Appearance size

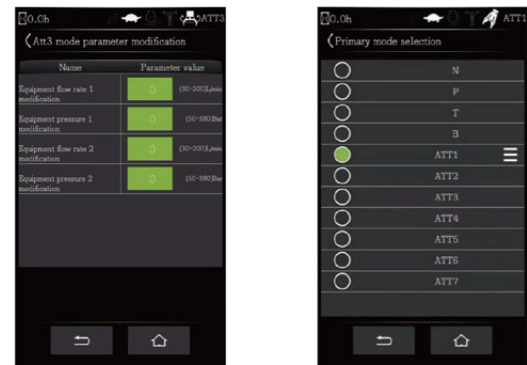
	XE155UCR	
A	Tail swing radius	1,530 mm
B	Overall height (to top of boom)	2,825 mm
C	Overall height (to top of handrail)	3,330 mm
D	Overall length	7,945 mm
E	Overall width	2,490 mm
F	Clearance under counterweight	943 mm
G	Overall height (to top of cab)	2,910 mm
H	Overall width of upperstructure	2,490 mm
I	Ground clearance	477 mm
J	Track height	837 mm
K	Tumbler length	2,997 mm
L	Track length	3,734 mm
M	Overall width of understructure	2,490 mm
N	Track gauge	1,990 mm
O	Shoe width	500 mm
P	Blade height	566 mm
Q	Blade lifting height	669 mm
R	Blade cutting depth	368 mm

Multi-Display in Colour

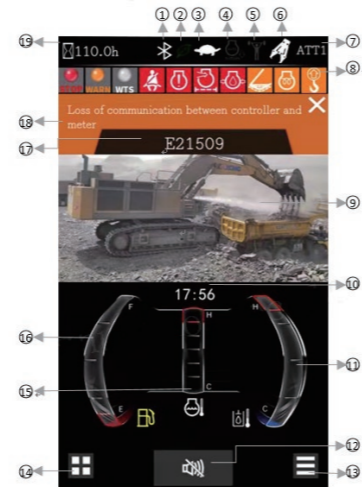
8 attachment modes and 3 power modes

Deliver the needed power according to your specific application while minimizing fuel consumption.

One click mode for quick selection and more convenient operation. Visual adjustment of pressure and flow parameters for more intelligent control.



1. Blue-tooth
2. Energy-saving mode indicator
3. Travel speed indicator
4. Automatic idling indicator
5. Power reinforcing indicator
6. Implement mode indicator
7. Power mode indicator
8. Alarm icon prompt area
9. Surveillance image
10. Clock time
11. Hydraulic oil temperature
12. Buzzer silence indicator
13. Main interface function settings
14. Main menu
15. Coolant temperature gauge
16. Fuel level gauge
17. Fault code display
18. Fault analysis content
19. Work hour display



Main Specifications

Engine

	XE155UCR
Model	QSF 3.8
Direct injection	√
Four strokes	√
Water cooled	√
Turbocharged	√
Air to air intercooler	√
Number of cylinders	4
Rated power/speed (ISO)	93 kW/2,200 rpm
Maximum torque/speed	500 N·m/1,500 rpm
Piston displacement	3.8 L

Hydraulic system

	XE155UCR
Main pump	2 variable pumps+1 gear pump
Rated flow of main pump	2×120 L/min+54 L/min
Relief valve setting pressure	34.3/37 MPa
Travel system pressure	34.3 MPa
Swing system pressure	25 MPa
Pilot system pressure	3.9 MPa

Oil capacity

	XE155UCR
Fuel tank capacity	200 L
Hydraulic tank capacity	90 L
Engine oil capacity	11 L

Main performance

	XE155UCR
Travel speed (H/L)	4.7/2.9 km/h
Swing speed	11.3 r/min
Gradeability	≤35 °
Ground pressure	49.98 kPa
Bucket digging force	107 kN
Arm digging force	80 kN
Maximum tractive force	134 kN

Standard

	XE155UCR
Length of boom	4,600 mm
Length of arm	2,520 mm
Bucket capacity	0.65 m ³ (Strengthened bucket)

Optional

	XE155UCR
Length of boom	-
Length of arm	-
Hydraulic quick hitch	-
Bucket capacity	0.32/0.4/0.6/0.7 m ³ Earthwork bucket 0.52/0.6 m ³ Strengthened bucket 0.52 m ³ Rock bucket

Engine

Auto-preheating	●
Fuel-water separator with water level instruction sensor	●
Fuel-water separator with heater (24 V)	○
Straight-flow air filter	●
Air prefilter	●
The cooling assembly in 50 °C ambient temperature	●
Dust screen for radiator	●
Fuel marker	●
Fuel-water quickly release device	●
Air pressure difference indicator	●
Auto idle	●

Hydraulic system

Auxiliary hydraulic valve	●
Single or dual way pipeline	●
Quick coupler pipeline	●
Rotary attachment pipeline	●
Hydraulic oil ISO VG 46	●
Hydraulic oil ISO VG 32	○
Hydraulic oil ISO VG 68	○
Electric proportional joysticks on right and right	●
Spare valve plate	●
Pressure monitor gauge	●

Cab & Interior

Pressurized cab	●
Air suspension seat with heater	●
Control box on left and right	●
Rain visor (Not mounted when front upper guard exists)	●
Front windshield divided by 70/30 ratio	●
Tempered glass	●
Sliding upper door window	●
Air conditioner with defroster and adjustable direction of air-out [Automatic][Pressurized]	●
Color LCD display with warning,filter / liquid refill and working hours information	●
Travel control pedal with detachable manual control lever	●
Double stereo speaker	●
Cup holder	●
Coat hook	●
Washable floor mat	●
Retractable safety belt	●
High and low travel speed switch	●
One-key boost	●
Reserved attachment switch	●
Sun visor	●
Skylight	●
Triple-gear windshield wiper with intermittent feature	●
File packet	●
Emergency exit on rear window	●
Hammer for emergency escape	●

Lubrication system

Manual centralized lubrication	●
--------------------------------	---

Undercarriage

Track guards for both sides	●
2×7 bottom rollers	●
2×2 carrier rollers	●
Tow ring on the bottom frame	●
2×46 joints,171 mm (7")pitch,track with triple grouser shoes, 500 mm (20")	●
Guard kits: Bottom sealing plate of undercarriage, sealing plate of travel motor	●
Track with triple grouser shoes, 700 mm (28")	○
Track with triple grouser shoes, 600 mm (24")	○
Dozer blade	●
Rubber track	○

Electrical system

Battery(2×750 CCA)	●
70 A alternator	●
24 V/2.9 kW starter motor	●
Cigarette lighter(12 V)	○
USB interface(5 V)	●
Emergency stop switch	●
Right and rear camera	●
AM-FM radio with digital display	●
DAB bluetooth digital radio	○
Rotating beacon	●
Two front working light on the cab(LED)	●
One rear working light on the cab(LED)	●
Two working lights on the boom(LED)	●
12 V Electric power interface	●
Interior light	●

Safety and guards

Lock for the cab door and each cabin	●
Warning horn	●
The quick coupler button with warning	●
Isolation plate between engine and pump chamber	●
Battery disconnect switch	●
Overheating warning	●
Safety handrail and pedals	●
Anti-skid plate/ anti-skid paste	●
Hydraulic safety locking lever	●
Rearview mirrors on left	●
Anti-burst valve on the boom	●
Anti-burst valve on the arm	●
Roll over protective structure	●
Operator protective guard	○
Top protective net	○
Protective net on upper front windshield	○
Protective net on lower front windshield	○

Counterweight

3.0 t counterweight	●
---------------------	---

● - Standard configuration ○ - Optional

Optimum services, XCMG Guaranteed



XCMG-approved attachments



Genuine parts



Extension of warranty



Financial solutions



Maintenance contract



Telematics

Professional Integrated Complete Solutions

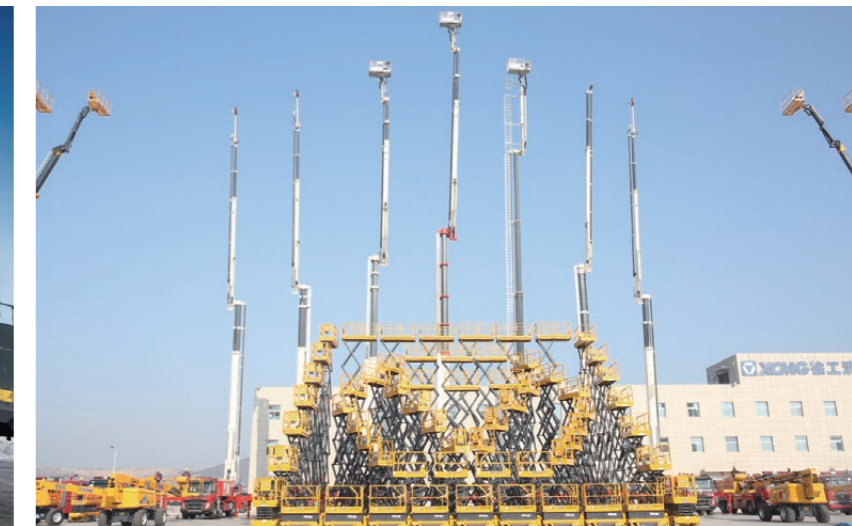
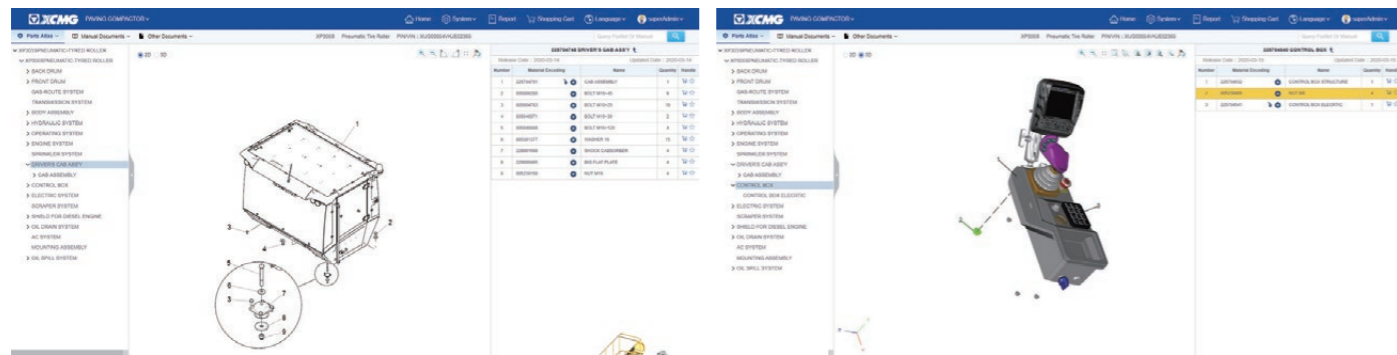
The XCMG group has built a strong reputation based on the quality, reliability and durability of its construction machinery. What's more, XCMG has gradually established a service network to constantly provide its local integrated and highly efficient complete solutions for all customers.

Full Range of Services Ready for you

In order to respond to your needs as fast as possible, XCMG experts are on their way to your job site from one of our facilities near you. Full range of services are available in order to reduce your total cost of ownership and increase your revenue.



XCMG Global Spare Parts System



Mobile cranes



Excavators



Aerial work platforms



Wheel loaders



Road machinery

